

DELHI TRANSCO LTD.

STATE LOAD DISPATCH CENTER

PROGRESS REPORT

OCT - 2018

| S. No. | CONTENTS | Page No. |
|---------------|--|-----------------|
| 1. | Salient Features of Delhi Power System | 3 |
| 2. | Performance of Generating Stations within Delhi | 4 |
| 3. | Details of Outage of Generating Stations within Delhi | 5-16 |
| 4. | Allocation of Power to Delhi from unallocated quota of central sector | 17 |
| 5. | Allocation of Power to Discoms | 18 |
| 6. | Power Availability Demand Position of Delhi at the time of occurrence of Peak Demand | 19 |
| 7. | Power Availability Demand Position of Delhi at the time of occurrence of Maximum Un-Restricted Demand | 20 |
| 8. | Source wise scheduled drawl from grid and Availability within Delhi | 21-24 |
| 9. | Shedding Details | 25-29 |
| 10. | Load Curve for the Day of Peak Demand | 30 |
| 11. | Load Curve for the day of occurrence of Maximum Un-Restricted Demand | 31 |
| 12. | Load Curve for the day of Maximum Energy Consumed | 32 |
| 13. | Load Curve for the day of Maximum Un-Restricted Energy Demand | 33 |
| 14. | Load Duration Curve | 34 |
| 15. | Frequency Analysis | 35 |
| 16. | Voltage Profile for significant 220kV Sub-Stations | 36 |
| 17. | Voltage Profile for significant 400kV Sub-Stations | 37-38 |
| 18. | Tripping Details of 400/220 KV System in Delhi Power System | 39 |
| 19. | Details of Under frequency Relay operations in Delhi Power System | 40 |

1 **SALIENT FEATURES OF DELHI POWER SYSTEM**

| Sr. No. | Features | OCT 2017 | OCT 2018 |
|---------|--|-----------------|-----------------|
| 1 | Effective Generation Capacity within Delhi in MW | | |
| | Rajghat Power House | 135 | 135 |
| | Gas Turbine | 270 | 270 |
| | Pragati Power Corporation Ltd. | 330 | 330 |
| | Badapur Thermal Power Station | 705 | 705 |
| | Rithala GT | 108 | 108 |
| | Bawana | 1372 | 1372 |
| | TOWMCL | 16 | 16 |
| | Total | 2936 | 2936 |
| 2 | Maximum Unrestricted Demand (MW) | 4723 | 4774 |
| | Date | 04.10.17 | 04.10.18 |
| | Time | 15.29.43 | 15.35.50 |
| 3 | Peak Demand met (MW) | 4723 | 4713 |
| | Date | 04.10.17 | 05.10.18 |
| | Time | 15.29.43 | 11.42.49 |
| 4 | Peak Availability (MW) | 4672 | 4583 |
| 5 | Shortage (-) / Surplus (+) in MW | (-) 51 | (-) 130 |
| 6 | Percentage Shortage (-) / Surplus (+) | (-) 1.08 | (-) 2.76 |
| 7 | Maximum Energy Consume in a day (Mus) | 101.667 | 99.609 |
| 8 | Energy Consumed during the month | 2637.380 | 2500.393 |
| 9 | Load Shedding in Mus | | |
| A) | Due to Grid Restrictions | | |
| i) | Under Frequency Relay Operations | 0.000 | 0.000 |
| ii) | Manual Load shedding from DTL S/Stns. | 0.000 | 0.000 |
| iii) | Load Shedding due to low frequency / Low Voltage / TTC/ATC Violation | | |
| | NDPL | 0.028 | 0.340 |
| | BRPL | 0.000 | 0.000 |
| | BYPL | 0.000 | 0.000 |
| | NDMC | 0.000 | 0.000 |
| | MES | 0.000 | 0.000 |
| iv) | Due to transmission Constraints in Central Sector | 0.000 | 0.000 |
| | Total due to Grid Restriction | 0.028 | 0.340 |
| B) | Due to Constraints in System in Mus | | |
| | DTL | 0.462 | 0.083 |
| | NDPL | 0.071 | 0.060 |
| | BRPL | 0.371 | 0.448 |
| | BYPL | 0.069 | 0.061 |
| | NDMC | 0.000 | 0.000 |
| | MES | 0.000 | 0.000 |
| | Other Agencies | 0.000 | 0.003 |
| | Total | 0.973 | 0.655 |
| 11 | Grand Total in Mus | 1.001 | 0.995 |

2. PERFORMANCE OF GENERATING STATIONS WITHIN DELHI DURING OCT 2018

A) For the month of Oct 2018

All Figures in MUs

| S. No | Stations | Gross Generation | Aux. Consumption | Net Generation | Availability (%) | Backing Down |
|-------|--------------|------------------|------------------|----------------|------------------|----------------|
| 1. | RPH | 0.000 | 0.204 | -0.204 | 0.00 | 0.00 |
| 2. | GT | 41.138 | 1.688 | 39.450 | 86.80 | 129.483 |
| 3. | PPCL | 124.489 | 2.792 | 121.697 | 99.27 | 115.075 |
| 4. | BTPS | 109.679 | 10.968 | 98.711 | 0.00 | 0.000 |
| 5. | Rithala | 0.000 | 0.004 | -0.004 | -- | -- |
| 6. | Bawana | 440.062 | 14.992 | 425.070 | 92.78 | 497.324 |
| 7. | Towmcl | 14.355 | 2.057 | 12.298 | -- | -- |
| 8. | EDWPCL | 5.509 | 1.075 | 4.434 | -- | -- |
| 9. | DMSWL | 10.410 | 1.972 | 8.438 | -- | -- |
| | TOTAL | 745.642 | 35.752 | 709.89 | -- | 741.882 |

B) For the Year 2018-19 (Upto Oct 2018)

| Power Station | Effective Capacity (MW) | Net Generation in MUs for Oct 2018 | Availability (%) for Oct 2018 | PLF (%) for Oct 2018 | Cumulative Generation in MUs upto Oct 2018 for the year 2018-19 | Cumulative Availability in % upto Oct 2018 for the year 2018-19 | Cumulative PLF in % upto Oct 2018 for the year 2018-19 |
|---------------|-------------------------|------------------------------------|-------------------------------|----------------------|---|---|--|
| RPH | 135 | -0.204 | 0.00 | 0.00 | -1.5933 | 0.00 | 0.00 |
| GT | 270 | 39.450 | 86.80 | 20.34 | 399.251 | 75.97 | 29.78 |
| PPCL | 330 | 121.697 | 99.27 | 50.95 | 1035.154 | 87.06 | 62.79 |
| BTPS | 705 | 98.711 | 0.00 | 0.00 | 1243.167 | 48.93 | 34.72 |
| Rithala | 108 | -0.004 | -- | -- | -0.370 | -- | -- |
| Bawana | 1372 | 425.070 | 92.78 | 44.20 | 2238.230 | 72.21 | 33.24 |
| Towmcl | 16 | 12.298 | -- | -- | 82.429 | -- | -- |
| EDWPCL | -- | 4.434 | -- | -- | 15.139 | -- | -- |
| DMSWL | -- | 8.438 | -- | -- | 67.142 | -- | -- |
| TOTAL | 2936 | 709.89 | -- | -- | 5078.5487 | -- | -- |

**3 DETAILS OF OUTAGES OF GENERATING STNS. WITHIN DELHI W.E.F. APRIL 2018
(will be updated later)**

RPH

| Unit No | Capacity in MW | Outage | | Synchronization | | Reason of Outage |
|---------|----------------|----------|-------|-----------------|------|--|
| | | Date | Time | Date | Time | |
| 1 | 67.5 | 08.05.15 | 13.40 | Contd. | | Not in operation due to not meeting pollution norms. |

| Unit No | Capacity in MW | Outage | | Synchronization | | Reason of Outage |
|---------|----------------|----------|-------|-----------------|------|--|
| | | Date | Time | Date | Time | |
| 2 | 67.5 | 21.05.15 | 10.20 | Contd. | | Not in operation due to not meeting pollution norms. |

(B) Gas Turbine

| Unit No | Capacity in MW | Outage | | Synchronization | | Reason of Outage |
|---------|----------------|---------|-------|-----------------|-------|---|
| | | Date | Time | Date | Time | |
| 1 | 30 | 1.4.18 | 00:00 | 4.4.18 | 06:44 | Machine stopped as per SLDC message due to low demand on CCNG |
| | | 17.4.18 | 00:45 | 17.4.18 | 13:25 | Machine tripped on Heavy jerk from the system and came on FSNL |
| | | 8.5.18 | 12:33 | 19.5.18 | 19:27 | Machine stopped due to changeover to GT#5.and not started due to no demand from SLDC. |
| | | 23.5.18 | 08:24 | 23.5.18 | 15:02 | Machine tripped on CRT got blank. |
| | | 26.5.18 | 12:23 | 27.5.18 | 19:25 | Machine tripped on heavy jerk and there was a CW line leakage.The PTW cancelled on 27.05.2018 at 19:25. |
| | | 27.5.18 | 19:25 | 29.5.18 | 19:47 | Machine could not be taken on bar due to no schedule from SLDC on CCNG |
| | | 2.6.18 | 09:20 | 4.6.18 | 19:37 | Machine stopped as per SLDC as no schedule on CCNG |
| | | 30.6.18 | 08:14 | 30.6.18 | 08:35 | Machine came on FSNL due to tripping of 160 MVA Transformer due to grid disturbance. |
| | | 3.7.18 | 21:07 | 4.7.18 | 23:12 | Machine stopped as per SLDC message due to low demand on CCNG. |
| | | 5.7.18 | 15:50 | 5.7.18 | 17:30 | Machine tripped on electrical fuse failure. Electrical trouble normal shutdown. |
| | | 29.7.18 | 00:04 | 30.7.18 | 11:12 | Machine stopped as per SLDC message due to low demand on CCNG. |
| | | 30.7.18 | 20:10 | 24.09.18 | 20:00 | Machine stopped due to heavy smoke below turbine. |

| Unit No | Capacity in MW | Outage | | Synchronization | | Reason of Outage |
|----------|----------------|----------|-------|-----------------|-------|---|
| | | Date | Time | Date | Time | |
| 2 | 30 | 17.4.18 | 00:45 | 17.4.18 | 03:40 | Machine tripped on Heavy jerk from the system and came on FSNL |
| | | 18.4.18 | 05:40 | 18.4.18 | 07:49 | Machine tripped on Exhaust Temperature High |
| | | 13.5.18 | 19:45 | 13.5.18 | 20:20 | Machine came on FSNL due to jerk in system. |
| | | 16.5.18 | 03:18 | 16.5.18 | 04:00 | Machine tripped on lub oil temp high. |
| | | 26.5.18 | 08:05 | 27.5.18 | 19:25 | Machine tripped on TAD High. Later machine cleared and continued on no load to attend leakage in CW line .PTW cancelled on 27.05.2018 at 19:25 hrs. |
| | | 27.5.18 | 19:25 | 29.5.18 | 21:17 | Machine could not be taken on bar due to no schedule from SLDC on CCNG |
| | | 2.6.18 | 09:15 | 4.6.18 | 11:35 | Machine stopped as per SLDC as no schedule on CCNG |
| | | 26.6.18 | 23:23 | 27.6.18 | 00:10 | Machine tripped on T communication link inoperative. |
| | | 27.6.18 | 12:46 | 27.6.18 | 18:00 | Machine stopped to replace faulty transformer by C&I div. |
| | | 30.6.18 | 07:40 | 30.6.18 | 12:46 | Machine stopped as per SLDC as no schedule on CCNG |
| | | 3.7.18 | 21:10 | 5.7.18 | 06:48 | Machine stopped as per SLDC message due to low demand on CCNG. |
| | | 30.7.18 | 23:32 | 20.08.18 | 11:42 | |
| 23.08.18 | 11:00 | 31.10.18 | 23:59 | | | |

| Unit No | Capacity in MW | Outage | | Synchronization | | Reason of Outage |
|---------|----------------|----------|-------|--|-------|--|
| | | Date | Time | Date | Time | |
| 3 | 30 | 1.4.18 | 00:00 | 4.4.18 | 07:20 | Machine stopped as per SLDC message due to low demand on CCSpot |
| | | 9.4.18 | 13:45 | 13.4.18 | 13:32 | Machine stopped as per SLDC message due to low demand on CCSpot. Started for Testing Black Start |
| | | 13.4.18 | 14:40 | 15.4.18 | 17:05 | Machine stopped as per SLDC message due to low demand on CCSpot. Started for Trial RUN |
| | | 15.4.18 | 17:10 | 16.4.18 | 02:18 | Machine stopped as per SLDC message due to low demand on CCSpot |
| | | 24.4.18 | 11:00 | 27.4.18 | 18:50 | Machine stopped as per SLDC message due to low demand on CCSpot |
| | | 29.4.18 | 00:03 | 12.05.18 | 00:20 | Machine stopped as per SLDC message due to low demand on CCSpot |
| | | 13.5.18 | 19:45 | 13.5.18 | 21:04 | Machine came on FSNL due to jerk in system. |
| | | 14.5.18 | 00:00 | 21.5.18 | 21:50 | Machine could not be taken on bar due to no schedule from SLDC on CCNG |
| | | 23.5.18 | 16:08 | 24.5.18 | 00:17 | Machine could not be taken on bar due to no schedule from SLDC on CCNG |
| | | 26.5.18 | 16:35 | 27.5.18 | 19:25 | Machine stopped to attend CW line leakage. The PTW cancelled on 27.05.2018 at 19:25. |
| | | 27.5.18 | 19:25 | 29.5.18 | 12:55 | Machine could not be taken on bar due to no schedule from SLDC on CCNG |
| | | 29.5.18 | 20:22 | 04.06.18 | 11:54 | Machine could not be taken on bar due to no schedule from SLDC on CCNG |
| | | 4.6.18 | 13:06 | 4.6.18 | 15:00 | Machine tripped on Exhaust temp high and machine cleared at 15:00 hrs.. |
| | | 4.6.18 | 15:00 | 20.6.18 | 12:45 | Machine not started after clearance due to low schedule from SLDC. |
| | | 28.6.18 | 00:01 | 28.6.18 | 13:06 | Machine stopped as per the message of SLDC |
| | | 30.6.18 | 08:14 | 30.6.18 | 08:30 | Machine came on FSNL due to tripping of 160 MVA Transformer due to grid disturbance. |
| | | 30.6.18 | 10:02 | 30.6.18 | 10:40 | Machine tripped on Battery undervoltage |
| | | 30.6.18 | 13:30 | 30.6.18 | 23:59 | Machine stopped as per the message of SLDC |
| | | 9.7.18 | 18:30 | 9.7.18 | 22:09 | Machine stopped as per SLDC message due to low demand on CCNG. |
| | | 12.7.18 | 00:02 | 13.7.18 | 10:15 | Machine stopped as per SLDC message due to low demand on CCNG. |
| | | 13.7.18 | 15:30 | 16.7.18 | 09:56 | Machine stopped as per SLDC message due to low demand on CCNG. |
| | | 18.7.18 | 01:44 | 18.7.18 | 12:09 | Machine stopped due to tripping of STG-II and due to non availability of STG-II. available |
| | | 18.7.18 | 14:17 | 20.7.18 | 09:40 | Machine stopped as no demand from SLDC/ |
| | | 20.7.18 | 18:45 | 21.7.18 | 11:30 | Machine stopped as per SLDC message due to low demand on CCNG. |
| 21.7.18 | 16:54 | 24.7.18 | 11:16 | Machine stopped as per SLDC message due to low demand on CCNG. | | |
| 25.7.18 | 17:40 | 31.10.18 | 23:59 | Machine stopped as per SLDC message due to low demand on CCNG. | | |

| Unit No | Capacity in MW | Outage | | Synchronization | | Reason of Outage |
|----------|----------------|----------|-------|---|-------|---|
| | | Date | Time | Date | Time | |
| 4 | 30 | 1.4.18 | 00:00 | 4.4.18 | 10:05 | Machine stopped as per SLDC message due to low demand on OCSpot |
| | | 6.4.18 | 07:40 | 6.4.18 | 16:31 | Machine tripped on Electrical trouble normal shutdown |
| | | 6.4.18 | 17:15 | 15.4.18 | 07:34 | Machine stopped as per SLDC message due to low demand on CCSpot |
| | | 15.4.18 | 23:29 | 19.4.18 | 13:04 | Machine tripped on Communication failed with IO Pack. The machine not started due to low schedule from SLDC |
| | | 20.4.18 | 08:58 | 30.4.18 | 23:59 | Machine stopped as per SLDC message due to low demand on CCSpot |
| | | 1.5.18 | 00:00 | 12.5.18 | 21:06 | Machine could not be taken on bar due to no schedule from SLDC on CCNG |
| | | 13.5.18 | 18:00 | 23.5.18 | 09:13 | Machine could not be taken on bar due to no schedule from SLDC on CCNG |
| | | 23.5.18 | 11:50 | 24.5.18 | 12:47 | Machine stopped as load could not be increased above 20 MW. |
| | | 24.5.18 | 12:47 | 26.5.18 | 08:44 | Machine stopped as per SLDC message due to low demand |
| | | 26.5.18 | 12:23 | 26.5.18 | 14:25 | Machine tripped due to jerk in system and later taken to attend leakage in CW line.. |
| | | 26.5.18 | 16:32 | 27.5.18 | 19:25 | Machine stopped to attend CW line leakage. |
| | | 27.5.18 | 19:25 | 28.5.18 | 12:18 | Machine started after attend of CW line leakage |
| | | 28.5.18 | 14:51 | 29.5.18 | 12:21 | Machine stopped as no schedule from SLDC . |
| | | 29.5.18 | 19:52 | 4.6.18 | 14:50 | Machine stopped as no schedule from SLDC . |
| | | 4.6.18 | 20:10 | 20.6.18 | 22:06 | Machine stopped as per SLDC as no schedule on CCNG |
| | | 28.6.18 | 00:03 | 28.6.18 | 13:01 | Machine stopped as per the message of SLDC |
| | | 30.6.18 | 08:14 | 30.6.18 | 08:46 | Machine came on FSNL due to grid disturbance. |
| | | 30.6.18 | 16:15 | 09.07.18 | 13:20 | Machine stopped as per SLDC as no schedule on CCNG |
| | | 9.7.18 | 18:20 | 9.7.18 | 21:52 | Machine stopped as per SLDC message due to low demand on CCNG. |
| | | 10.7.18 | 02:13 | 10.7.18 | 13:40 | Machine stopped as per SLDC message due to low demand on CCNG. |
| 12.7.18 | 00:02 | 12.7.18 | 13:55 | Machine stopped as per SLDC message due to low demand on CCNG. | | |
| 14.7.18 | 04:36 | 14.7.18 | 07:29 | Machine tripped on control trip and overtemperature trip alarm on CRT | | |
| 05.10.18 | 16.40 | 05.10.18 | 17.31 | Unit tripped on Electrical trouble normal shutdown. | | |

| Unit No | Capacity in MW | Outage | | Synchronization | | Reason of Outage |
|----------|----------------|----------|-------|--|-------|---|
| | | Date | Time | Date | Time | |
| 5 | 30 | 1.4.18 | 00:00 | 29.4.18 | 10:01 | Machine stopped as per SLDC message due to low demand on CCSpot |
| | | 29.4.18 | 13:45 | 29.4.18 | 18:10 | Trial run |
| | | 29.4.18 | 22:14 | 9.5.18 | 12:19 | Machine stopped as per SLDC message due to low demand on CCSpot |
| | | 12.5.18 | 17:25 | 13.5.18 | 13:03 | Machine tripped on overspeed bolt trip alarm appeared. |
| | | 13.5.18 | 18:00 | 23.5.18 | 10:40 | Machine stopped as per SLDC message due to low demand |
| | | 23.5.18 | 23:08 | 25.5.18 | 16:03 | Machine tripped on Exhaust overtemperature. |
| | | 26.5.18 | 12:23 | 26.5.18 | 16:35 | Machine tripped on heavy jerk and there was a CW line leakage. |
| | | 26.5.18 | 16:35 | 27.5.18 | 19:25 | Machine stopped to attend CW line leakage. |
| | | 27.5.18 | 19:25 | 28.5.18 | 13:33 | Machine started after CW line leakage attended. |
| | | 2.6.18 | 12:25 | 2.6.18 | 20:30 | Machine stopped to attend hotspot in HV bushing of STG-III Transformer.Machine made available at 20:30 hrs. |
| | | 2.6.18 | 20:30 | 4.6.18 | 09:16 | Machine stopped as per SLDC as no schedule on CCNG |
| | | 10.6.18 | 08:02 | 11.6.18 | 10:50 | Machine stopped as per SLDC as no schedule on CCNG |
| | | 17.6.18 | 11:00 | 1.7.18 | 22:30 | Machine stopped as per SLDC as no schedule on CCNG |
| | | 2.7.18 | 03:32 | 3.7.18 | 21:04 | Machine stopped as per SLDC message due to low demand on CCNG. |
| | | 5.7.18 | 02:30 | 9.7.18 | 22:49 | Machine stopped as per SLDC message due to low demand on CCNG.Machine started in open cycle mode as per the system. |
| | | 10.7.18 | 02:13 | 10.7.18 | 10:15 | Machine stopped as per SLDC message due to low demand on CCNG. |
| | | 12.7.18 | 14:01 | 18.7.18 | 12:58 | Machine stopped as per SLDC message due to low demand on CCNG. |
| | | 20.7.18 | 17:45 | 20.7.18 | 17:57 | Machine desynchronized and put on FSNL due to passing of trailer. |
| | | 21.7.18 | 00:02 | 25.7.18 | 16:33 | Machine stopped as per SLDC message due to low demand on CCNG. |
| | | 26.7.18 | 10:15 | 30.7.18 | 20:30 | Machine stopped as per SLDC message due to low demand on CCNG. |
| 28.08.18 | 16.19 | 28.08.18 | 20.07 | Machine tripped on " Electrical trouble normal shutdown" and 52 H fuse failure alarm appeared. | | |
| 05.09.18 | 12.39 | 05.09.18 | 13.57 | Machine tripped due to false alarm of condensate level high. | | |

| Unit No | Capacity in MW | Outage | | Synchronization | | Reason of Outage |
|----------|----------------|----------|-------|---|-------|---|
| | | Date | Time | Date | Time | |
| 6 | 30 | 1.4.18 | 00:00 | 23.05.18 | 18.13 | Machine under Major Inspection and out of DC |
| | | 23.5.18 | 18:30 | 24.5.18 | 15:14 | Machine tripped on Generator journal bearing drain oil temp High and lub oil header temp alos high. |
| | | 26.5.18 | 16:35 | 27.5.18 | 19:25 | Machine stopped to attend CW line leakage.The PTW cancelled on 27.05.2018 at 19:25. |
| | | 27.5.18 | 19:25 | 28.5.18 | 11:21 | Machine started after CW line leakage attended. |
| | | 30.5.18 | 11:20 | 30.5.18 | 12:42 | Machine tripped on Exhaust temperature high. |
| | | 2.6.18 | 12:30 | 2.6.18 | 18:10 | Machine stopped to attend hotspot in HV bushing of STG-III Transformer. |
| | | 10.6.18 | 08:03 | 10.6.18 | 20:05 | Machine stopped to attend problem in Governing system of STG. The machine made available at 20.05 hrs. and not taken on load due to low schedule from SLDC. |
| | | 10.6.18 | 20:05 | 11.6.18 | 10:58 | Machine not started as per SLDC as no schedule on CCNG |
| | | 17.6.18 | 11:00 | 20.6.18 | 13:46 | Machine stopped as per SLDC as no schedule on CCNG |
| | | 20.6.18 | 19:00 | 1.7.18 | 20:55 | Machine stopped as per SLDC as no schedule on CCNG |
| | | 2.7.18 | 03:23 | 3.7.18 | 20:56 | Machine stopped as per SLDC message due to low demand on CCNG. |
| | | 5.7.18 | 18:05 | 5.7.18 | 19:35 | Machine tripped on communication IO Pack failure. Machine started upto FSNL and cleared at 19:35 hrs. |
| | | 5.7.18 | 19:35 | 8.7.18 | 22:57 | Machine not taken on load due to no schedule from SLDC and later started on open cycle mode as per system demand.. |
| | | 13.7.18 | 16:00 | 18.7.18 | 01:35 | Machine stopped as per SLDC message due to low demand on CCNG. |
| | | 20.7.18 | 17:45 | 20.7.18 | 17:56 | Machine desynchronized and put on FSNL due to passing of trailer. |
| | | 21.7.18 | 00:02 | 23.7.18 | 10:44 | Machine stopped as per SLDC message due to low demand on CCNG. |
| | | 26.7.18 | 10:15 | 30.7.18 | 13:08 | Machine stopped as per SLDC message due to low demand on CCNG. |
| 22.10.18 | 18.04 | 24.10.18 | 18.15 | Unit tripped due to Y & B phase to phase fault. | | |

| Unit No | Capacity in MW | Outage | | Synchronization | | Reason of Outage |
|-----------|----------------|----------|-------|-----------------|-------|---|
| | | Date | Time | Date | Time | |
| STG -1 | 30 | 17.4.18 | 00:45 | 17.4.18 | 15:14 | Machine tripped on Heavy jerk from the system |
| | | 26.4.18 | 16:52 | 26.4.18 | 18:44 | Machine tripped due to tripping of 2 MVA Transformer-1 |
| | | 1.5.18 | 00:28 | 1.5.18 | 02:16 | Machine tripped due to tripping of 2 MVA Transformer. |
| | | 8.5.18 | 12:34 | 8.5.18 | 13:25 | Tripped while slashing HRSG-1 |
| | | 8.5.18 | 14:56 | 8.5.18 | 15:54 | Tripped on class -A relay operated. |
| | | 13.5.18 | 19:45 | 13.5.18 | 21:41 | Machine tripped due to jerk in system. |
| | | 16.5.18 | 03:02 | 16.5.18 | 04:52 | Machine tripped due to jerk in system |
| | | 16.5.18 | 12:34 | 16.5.18 | 13:21 | Machine tripped on Turbine speed very high I,e malfunctioning of output card of turbine. |
| | | 26.5.18 | 16:35 | 27.5.18 | 19:25 | Machine stopped to attend CW line leakage.The PTW cancelled on 27.05.2018 at 19:25. |
| | | 27.5.18 | 19:25 | 30.5.18 | 01:16 | Machine could not be taken on bar due to no schedule from SLDC |
| | | 2.6.18 | 09:23 | 4.6.18 | 13:44 | Machine stopped as per SLDC as no schedule |
| | | 26.6.18 | 23:30 | 27.6.18 | 00:40 | Machine tripped on Exhaust temp high |
| | | 30.6.18 | 07:34 | 30.6.18 | 18:40 | Machine tripped on Heavy jerk in the system and delay in synchronizing due to vibration problem in front and rear bearing AND EJECTOR FLANGE DAMAGED IN JERK.. |
| | | 3.7.18 | 16:40 | 4.7.18 | 21:15 | Machine tripped on Heavy jerk due to system and due to jerk in system there was leakage in Ejectir flange. And machen was made ready on 04.07.2018 at 20:34 hrs.. |
| | | 4.7.18 | 21:15 | 5.7.18 | 02:05 | Machine was not started due to low demand from SLDC.. |
| | | 28.7.18 | 13:36 | 28.7.18 | 17:50 | Machine tripped due to jerk in the system and leading to outage of 160 MVA Transformer 1 & 2 both. |
| | | 30.7.18 | 23:32 | 20.08.18 | 15:40 | Machine was not started due to low demand from SLDC.. |
| | | 20.08.18 | 16:05 | 20.08.18 | 22:45 | Unit tripped on high viberation in bearing. |
| | | 23.08.18 | 11:00 | 31.08.18 | 23:59 | Machine stopped as per SLDC message due to low demand |
| | | 07.10.18 | 03:10 | 07.10.18 | 05:30 | Unit tripped due to all running parameters shown in blue band. |

| Unit No | Capacity in MW | Outage | | Synchronization | | Reason of Outage |
|-----------|----------------|---------|-------|--|-------|---|
| | | Date | Time | Date | Time | |
| STG -2 | 30 | 1.4.18 | 00:00 | 4.4.18 | 14:08 | Machine stopped as per SLDC message due to low demand on CCSpot |
| | | 7.4.18 | 11:35 | 7.4.18 | 12:08 | Machine tripped suddenly on control valve closing |
| | | 9.4.18 | 13:45 | 15.4.18 | 09:43 | Machine stopped as per SLDC message due to low demand on CCSpot |
| | | 17.4.18 | 01:20 | 17.4.18 | 04:58 | Machine tripped on all the parameters showing on blue band . |
| | | 18.4.18 | 08:01 | 18.4.18 | 08:35 | Machine tripped on Turbine channel 1&2 operated alarm appeared. |
| | | 18.4.18 | 10:48 | 18.4.18 | 11:38 | Machine tripped on hunting started of parameters on BCD. |
| | | 24.4.18 | 11:00 | 24.4.18 | 12:15 | Machine stopped to attend oil leakage from servo motor line |
| | | 24.4.18 | 12:15 | 27.4.18 | 21:00 | Machine cleared but not started due to no schedule from SLDC |
| | | 29.4.18 | 00:03 | 30.4.18 | 23:59 | Machine stopped as per SLDC message due to low demand on CCSpot |
| | | 17.4.18 | 01:20 | 17.4.18 | 03:58 | Machine tripped on all the parameters showing on blue band . |
| | | 1.5.18 | 00:00 | 12.5.18 | 03:58 | Machine could not be taken on bar due to no schedule from SLDC |
| | | 13.5.18 | 19:45 | 13.5.18 | 20:30 | Machine tripped on jerk in system.But later was not started due to low schedule from SLDC |
| | | 13.5.18 | 20:30 | 21.5.18 | 23:49 | Machine could not be taken on bar due to no schedule from SLDC |
| | | 26.5.18 | 16:35 | 27.5.18 | 19:25 | Machine stopped to attend CW line leakage.The PTW cancelled on 27.05.2018 at 19:25. |
| | | 27.5.18 | 19:25 | 29.5.18 | 14:33 | Machine could not be taken on bar due to no schedule from SLDC |
| | | 29.5.18 | 18:40 | 04.06.18 | 16:08 | Machine stopped to attend water leakage from inlet line of Generator cooler. |
| | | 4.6.18 | 20:13 | 20.6.18 | 15:30 | Machine stopped as per SLDC as no schedule |
| | | 28.6.18 | 00:03 | 28.6.18 | 15:40 | Machine stopped as per the message of SLDC |
| | | 30.6.18 | 08:14 | 30.6.18 | 13:30 | Machine tripped due to tripping of 160 MVA transformer as there was disturbance in the grid. |
| | | 30.6.18 | 13:30 | 12.07.18 | 16:30 | Machine could not be taken on bar due to Axial shift and taken out of DC. |
| | | 14.7.18 | 04:36 | 16.7.18 | 14:30 | Machine tripped due to tripping of GT-4 and later not started due to no schedule from SLDC. |
| | | 17.7.18 | 00:55 | 17.7.18 | 01:38 | Machine tripped on Class A trip alarm, Reverse power trip alarm, Power relay and protection SSVT fuse fail. |
| | | 17.7.18 | 18:06 | 17.7.18 | 21:35 | Machine tripped on Ch-I & CH-II and class A relay trip alarm appeared on CRT. |
| 17.7.18 | 21:49 | 21.7.18 | 16:20 | Machine again tripped on CH-I & CH-II and Gen RJB and FJB Vibration very high and not started due to no demand.. | | |
| 25.7.18 | 17:40 | 31.1018 | 23:59 | Machine stopped as per SLDC message due to low demand on CCNG. | | |

| Unit No | Capacity in MW | Outage | | Synchronization | | Reason of Outage |
|----------|----------------|----------|-------|--|-------|---|
| | | Date | Time | Date | Time | |
| STG -3 | 30 | 1.4.18 | 00:00 | 08.05.18 | 14.18 | Machine under O/H |
| | | 8.5.18 | 14:28 | 8.5.18 | 15:52 | Tripped on class -A relay operated. |
| | | 11.5.18 | 15:54 | 12.5.18 | 13:50 | Machine tripped on calibration of woodward governor.Is under maintenance and STG-II taken on 12.05.2018 at 13:50 made available. |
| | | 12.5.18 | 13:50 | 23.5.18 | 13:30 | Machine could not be taken on bar due to no schedule from SLDC |
| | | 23.5.18 | 23:08 | 24.5.18 | 19:23 | Machine tripped on tripping of GT-5 & 6 |
| | | 26.5.18 | 16:35 | 27.5.18 | 19:25 | Machine stopped to attend CW line leakage.The PTW cancelled on 27.05.2018 at 19:25. |
| | | 27.5.18 | 19:25 | 28.5.18 | 14:18 | Machine started after attend CW line leakage. |
| | | 28.5.18 | 17:46 | 28.5.18 | 18:13 | Machine tripped on low vacuum. |
| | | 1.6.18 | 08:15 | 1.6.18 | 11:06 | Machine stopped to attend oil leakage in governor system. |
| | | 2.6.18 | 12:32 | 2.6.18 | 19:48 | Machine stopped to attend hotspot in HV bushing of STG-III Transformer. |
| | | 9.6.18 | 11:30 | 9.6.18 | 12:50 | Machine stopped to attend problem in Governing system of STG. |
| | | 10.6.18 | 03:52 | 10.6.18 | 04:24 | Machine stopped to attend problem in Governing system of STG. |
| | | 10.6.18 | 08:03 | 10.6.18 | 20:05 | Machine again stopped to attend problem in Governing system of STG. The machine made available on 10.06.2018 at 20:05 hrs but not taken on load due to low schedule from SLDC |
| | | 10.6.18 | 20:05 | 11.6.18 | 13:00 | Machine not started due to low schedule from SLDC |
| | | 16.6.18 | 12:25 | 16.6.18 | 16:15 | Machine tripped on FJB vibration very high. |
| | | 17.6.18 | 11:00 | 20.6.18 | 17:45 | Machine stopped as per SLDC as no schedule |
| | | 20.6.18 | 17:45 | 24.6.18 | 16:45 | Machine was out of DC due to problem in MOP and taken in DC on 24.06.2018 at 16:45 hrs. The machine not taken on load due to low schedule from SLDC. |
| | | 24.6.18 | 16:45 | 30.6.18 | 12:17 | Machine after being taken in DC not taken on load due to no schedule from SLDC |
| | | 30.6.18 | 12:17 | 30.6.18 | 20:00 | Machine not available due to problem in MOP. |
| | | 30.6.18 | 20:00 | 30.6.18 | 23:59 | Machine not taken on bar due to low schedule from SLDC. |
| | | 1.7.18 | 22:56 | 3.7.18 | 22:00 | STG-III out of DC due to unavailability of MOP but made available on 03.07.2018 at 22:00 hrs. |
| | | 4.7.18 | 21:52 | 9.7.18 | 09:39 | Machine out of DC due to oil leakage from MOP and made available by C&I on 09.07.2018 at 09:39 hrs.. |
| | | 9.7.18 | 09:39 | 9.7.18 | 11:32 | Machine after made available started on 9/7/2018 at 11:32 hrs. |
| | | 10.7.18 | 16:20 | 10.7.18 | 17:36 | Machine tripped while increasing load from 11.5 MW to 19.5 MW. |
| | | 13.7.18 | 16:00 | 18.7.18 | 03:44 | Machine was not started due to low demand from SLDC.. |
| | | 20.7.18 | 00:00 | 20.7.18 | 19:51 | Machine desynchronized. |
| | | 21.7.18 | 00:02 | 23.7.18 | 12:40 | Machine was not started due to low demand from SLDC.. |
| | | 26.7.18 | 10:15 | 30.7.18 | 15:40 | Machine stopped as per SLDC message due to low demand on CCNG. |
| | | 30.7.18 | 17:36 | 30.7.18 | 19:18 | Machine tripped on 99 GT, 32G-2B relay operated. |
| | | 28.08.18 | 16:39 | 28.08.18 | 21:25 | Machine tripped on Bearing vibration high. |
| 29.08.18 | 17:25 | 29.08.18 | 18.16 | Machine tripped on GE Protection Main fuse failure and AVR VT fuse failure alarm on backup desk. | | |
| 05.09.18 | 12.39 | 05.09.18 | 15.02 | STG stopped as fire observed near front gland during costing down. | | |
| 22.10.18 | 18.04 | 22.10.18 | 20.40 | Unit tripped due to tripping of GT # 6 as half module was running. | | |

(C) PRAGATI

| Unit No | Capacity in MW | Outage | | Synchronization | | Reason of Outage |
|---------|----------------|----------|-------|-----------------|-------|---------------------------------|
| | | Date | Time | Date | Time | |
| 1 | 104 | 01.04.18 | 00.00 | 17.04.18 | 16.49 | Stopped for HGPI |
| | | 03.05.18 | 12.46 | 04.05.18 | 15.07 | Stopped due to low demand. |
| | | 04.05.18 | 16.10 | 11.05.18 | 14.16 | Stopped due to low demand. |
| | | 13.05.18 | 19.50 | 13.05.18 | 20.14 | Tripped due to grid disturbance |
| | | 16.05.18 | 03.01 | 16.05.18 | 04.49 | |
| | | 26.05.18 | 12.24 | 26.05.18 | 13.22 | |
| | | 26.05.18 | 13.56 | 26.05.18 | 14.42 | |
| | | 30.06.18 | 08.17 | 30.06.18 | 12.57 | |
| | | 28.07.18 | 00.10 | 03.08.18 | 12.30 | Stopped due to low demand. |
| | | 06.08.18 | 12.31 | 13.08.18 | 17.20 | |
| | | 02.09.18 | 16.00 | 21.09.18 | 08.32 | |
| | | 06.10.18 | 00.00 | 31.10.18 | 23.59 | |

| Unit No | Capacity in MW | Outage | | Synchronization | | Reason of Outage |
|---------|----------------|----------|-------|-----------------|-------|--|
| | | Date | Time | Date | Time | |
| 2 | 104 | 17.04.18 | 18.47 | 18.04.18 | 12.45 | Tripped on internal fault. |
| | | 18.04.18 | 12.45 | 19.04.18 | 06.24 | Stopped due to low demand. |
| | | 03.05.18 | 07.19 | 03.05.18 | 09.07 | Tripped due to grid disturbance |
| | | 26.05.18 | 13.56 | 26.05.18 | 14.38 | |
| | | 30.06.18 | 08.17 | 30.06.18 | 09.35 | |
| | | 12.07.18 | 17.16 | 12.07.18 | 18.20 | |
| | | 29.07.18 | 15.50 | 29.07.18 | 17.29 | Tripped on internal fault. |
| | | 13.08.18 | 18.51 | 13.08.18 | 21.15 | Unit stopped for checking of diverter dumper seal |
| | | 13.08.18 | 21.15 | 16.08.18 | 14.30 | Stopped due to low demand. |
| | | 16.08.18 | 14.30 | 30.08.18 | 18.45 | Unit stopped due to repairing of diverter dumper. |
| | | 30.08.18 | 18.45 | 04.09.18 | 12.13 | Stopped due to low demand. |
| | | 21.09.18 | 14.00 | 21.09.18 | 18.30 | GT#2 swapped by GT#1 to attend AVR problem by BHEL |
| | | 21.09.18 | 18.30 | 04.10.18 | 15.41 | Stopped due to low demand. |
| | | 05.10.18 | 11.43 | 05.10.18 | 12.20 | Tripped on internal fault. |

| Unit No | Capacity in MW | Outage | | Synchronization | | Reason of Outage |
|----------|----------------|----------|-------|----------------------------|-------|----------------------------------|
| | | Date | Time | Date | Time | |
| STG | 122 | 20.04.18 | 15.01 | 20.04.18 | 16.43 | Tripped on internal fault. |
| | | 03.05.18 | 07.19 | 03.05.18 | 09.00 | Tripped due to grid disturbance |
| | | 03.05.18 | 09.00 | 03.05.18 | 10.48 | Internal problem |
| | | 03.05.18 | 16.51 | 03.05.18 | 17.50 | Tripped on internal fault. |
| | | 26.05.18 | 13.56 | 26.05.18 | 15.39 | Tripped due to grid disturbance |
| | | 26.05.18 | 17.59 | 26.05.18 | 19.41 | |
| | | 03.06.18 | 07.23 | 03.06.18 | 12.16 | |
| | | 30.06.18 | 08.17 | 30.06.18 | 11.50 | |
| | | 12.07.18 | 17.16 | 12.07.18 | 18.27 | Tripped on internal fault. |
| | | 15.07.18 | 04.29 | 15.07.18 | 08.34 | |
| | | 24.07.18 | 12.37 | 24.07.18 | 13.39 | Unit tripped as unit -2 tripped. |
| | | 29.07.18 | 15.50 | 29.07.18 | 18.42 | |
| | | 14.08.18 | 19.30 | 14.08.18 | 22.45 | Tripped due to grid disturbance |
| | | 16.08.18 | 15.32 | 23.08.18 | 09.59 | GCB oil leakage. |
| | | 29.08.18 | 08.05 | 29.08.18 | 09.10 | Tripped on internal fault. |
| | | 29.08.18 | 14.01 | 29.08.18 | 16.28 | |
| | | 02.09.18 | 16.03 | 04.09.18 | 17.09 | Stopped due to low demand. |
| 06.09.18 | 04.14 | 06.09.18 | 05.40 | Tripped on internal fault. | | |
| 27.09.18 | 09.15 | 27.09.18 | 10.39 | | | |
| 27.09.18 | 17.15 | 27.09.18 | 18.08 | | | |

(D) BADARPUR THERMAL POWER STATION

| Unit | Capacity in MW | Outage | | Synchronization | | Reason of Outage |
|------|----------------|----------|-------|-----------------|-------|---|
| | | Date | Time | Date | Time | |
| 1 | 95 | 01.04.18 | 00.00 | 31.08.18 | 00.00 | Not in operation due to not meeting pollution norms |

| Unit | Capacity in MW | Outage | | Synchronization | | Reason of Outage |
|------|----------------|----------|-------|-----------------|-------|---|
| | | Date | Time | Date | Time | |
| 2 | 95 | 01.04.18 | 00.00 | 31.08.18 | 00.00 | Not in operation due to not meeting pollution norms |

| Unit | Capacity in MW | Outage | | Synchronization | | Reason of Outage |
|------|----------------|----------|-------|-----------------|-------|---|
| | | Date | Time | Date | Time | |
| 3 | 95 | 01.04.18 | 00.00 | 31.08.18 | 00.00 | Not in operation due to not meeting pollution norms |

| Unit | Capacity in MW | Outage | | Synchronization | | Reason of Outage |
|------|----------------|----------|-------|-----------------|-------|---|
| | | Date | Time | Date | Time | |
| 4 | 210 | 01.04.18 | 00.00 | 01.05.18 | 11.33 | Not in operation due to not meeting pollution norms |
| | | 03.05.18 | 13.29 | 13.05.18 | 00.42 | Reserve shutdown |
| | | 30.07.18 | 20.30 | 31.07.18 | 10.30 | Coal shortage |
| | | 31.07.18 | 10.30 | 01.08.18 | 05.29 | Reserve shutdown |
| | | 07.08.18 | 11.06 | 08.08.18 | 15.17 | Boiler tube leakage |
| | | 09.08.18 | 01.08 | 09.08.18 | 17.54 | ID Fan bearing temp high. |

| Unit | Capacity in MW | Outage | | Synchronization | | Reason of Outage |
|------|----------------|----------|-------|-----------------|-------|---|
| | | Date | Time | Date | Time | |
| 5 | 210 | 01.04.18 | 00.00 | 09.04.18 | 07.54 | Not in operation due to not meeting pollution norms |

(E) BAWANA CCGT POWER STATION

| Unit | Capacity in MW | Outage | | Synchronization | | Reason of Outage |
|------|----------------|----------|-------|-----------------|-------|--|
| | | Date | Time | Date | Time | |
| 1 | 216 | 21.04.18 | 0.00 | 23.04.18 | 07.00 | Machine shut down for Filter Replacement so half of STG #1 was also not available. |
| | | 16.06.18 | 08.02 | 16.06.18 | 23.59 | Unit taken out of DC for solenoid change |
| | | 28.06.18 | 00.50 | 30.06.18 | 23.59 | DP was running very high so unit taken out of DC for filter replacement. |
| | | 15.07.18 | 09.10 | 15.07.18 | 21.45 | Filter replacement and problem in compressor bleed (CBV) valve operation attended |
| | | 21.07.18 | 00.00 | 23.07.18 | 17.00 | Problem in purge valve resolved by replacement of solenoid and compressor washing done during this outage. |
| | | 17.08.18 | 13.40 | 17.08.18 | 22.00 | Unit tripped due to low lube oil header pressure, STG also tripped manually. |
| | | 28.08.18 | 05.08 | 28.08.18 | 18.45 | Unit tripped due to rotor earth fault. |
| | | 25.09.18 | 01.32 | 25.09.18 | 14.00 | Generator Trip |

| Unit | Capacity in MW | Outage | | Synchronization | | Reason of Outage |
|------|----------------|----------|-------|-----------------|-------|--|
| | | Date | Time | Date | Time | |
| 2 | 216 | 16.06.18 | 08.02 | 16.06.18 | 23.59 | Unit taken out of DC for solenoid change |
| | | 28.06.18 | 00.50 | 30.06.18 | 23.59 | DP was running very high so unit taken out of DC for filter replacement. |
| | | 15.07.18 | 09.10 | 15.07.18 | 21.45 | Filter replacement and problem in compressor bleed (CBV) valve operation attended |
| | | 21.07.18 | 00.00 | 23.07.18 | 17.00 | Problem in purge valve resolved by replacement of solenoid and compressor washing done during this outage. |
| | | 17.08.18 | 13.40 | 17.08.18 | 22.00 | Unit tripped due to low lube oil header pressure, STG also tripped manually. |
| | | 28.08.18 | 05.08 | 28.08.18 | 18.45 | Unit tripped due to rotor earth fault. |

| Unit | Capacity in MW | Outage | | Synchronization | | Reason of Outage |
|----------|----------------|----------|-------|--|-------|---|
| | | Date | Time | Date | Time | |
| STG-1 | 254 | 02.04.18 | 06.49 | 02.04.18 | 11.58 | Field breaker and Excitation Trip generated due to Regulation Supply fuse failure. Circuit checked, Power fuse changed and machine synchronised to further test the system. |
| | | 02.04.18 | 12.12 | 02.04.18 | 13.34 | Again machine tripped on same fault. Fuse Barrier circuit replaced due to malfunctioning of micro switch contact. |
| | | 02.04.18 | 19.37 | 02.04.18 | 21.09 | Field breaker and Excitation Trip generated due to Regulation Supply fuse failure. The circuit of PLC and fuse barrier checked and digital I/O card which generates this signal changed, machine synchronised. |
| | | 02.04.18 | 21.50 | 02.04.18 | 22.27 | During HRSG paralleling STG tripped on Low Main steam temperature as HP Bypass#1 was not following reference properly, and loads on GTs were high for smooth paralleling. |
| | | 02.05.18 | 21.32 | 02.05.18 | 22.21 | The cold gas temp control valve was fully open under full-module operation with cold gas temp around 43 deg. As GT #2 was stopped in accordance with the system demand, the load on STG #1 reduced to around 95 MW lowering the cold gas temp. With residual activities of isolation of HRSG #2 in progress, command was given to reduce the opening of temp-control-valve. The valve is designed for inching operation. However, the valve closed completely shutting of cooling water supply resulting in high cold-gas temp and leading to protection-trip on the same |
| | | 20.05.18 | 07.35 | 20.05.18 | 15.42 | STG#1 Stopped due to Common Thermal Overload alarm appeared around 07:35 hrs. Intermittent flashover & smoke observed at Transformer cooling fan supply control -panel at site . All running cooling fans tripped & temperature indication at ECP disappeared. STG#1 Stopped/Tripped manually under the circumstances & panel supply made off. |
| | | 16.06.18 | 08.02 | 16.06.18 | 23.59 | Unit taken out of DC for solenoid change |
| | | 28.06.18 | 00.50 | 30.06.18 | 23.59 | DP was running very high so unit taken out of DC for filter replacement. |
| | | 15.07.18 | 09.10 | 15.07.18 | 21.45 | Filter replacement and problem in compressor bleed (CBV) valve operation attended |
| | | 21.07.18 | 00.00 | 23.07.18 | 17.00 | Problem in purge valve resolved by replacement of solenoid and compressor washing done during this outage. |
| | | 27.07.18 | 00.00 | 30.07.18 | 19.30 | PHE Cleaning |
| | | 17.08.18 | 13.40 | 17.08.18 | 22.00 | Unit tripped due to low lube oil header pressure, STG also tripped manually. |
| | | 28.08.18 | 05.08 | 28.08.18 | 18.45 | Unit tripped due to rotor earth fault. |
| 29.08.18 | 15.29 | 29.08.18 | 16.35 | Unit tripped due to generator electrical protection alarm. | | |
| 14.09.18 | 17.08 | 14.09.18 | 01.57 | Bus bar protection. | | |

| Unit | Capacity in MW | Outage | | Synchronization | | Reason of Outage |
|------|----------------|----------|-------|-----------------|-------|--|
| | | Date | Time | Date | Time | |
| 3 | 216 | 17.04.18 | 00.00 | 30.04.18 | 23.59 | Minor overhauling of Generator and Upgradation of GT#3 and BHM installation. |
| | | 29.06.18 | 00.00 | 29.06.18 | 02.00 | Desynch due to problem in GCS (BMS not firing). |
| | | 14.07.18 | 10.00 | 14.07.18 | 14.00 | Normalization of 6.6kV System Mod#2 |

| Unit | Capacity in MW | Outage | | Synchronization | | Reason of Outage |
|------|----------------|----------|-------|-----------------|-------|---|
| | | Date | Time | Date | Time | |
| 4 | 216 | 01.04.18 | 00.00 | 16.04.18 | 18.00 | Machine taken out of DC for Planned maintenance.(Combustion inspection) |
| | | 22.05.18 | 15.33 | 22.05.18 | 16.15 | GT#4 came on FSNL at 15:33 hrs. due to AVR fault and subsequent tripping of GCB. Unit was test synch at 16:20 hrs. but due to poor gas pipeline hydraulics GT#4 taken out of DC wef 16:15 hrs.. |
| | | 22.05.18 | 16.15 | 24.05.18 | 12.30 | Due to poor gas pipeline hydraulics GT#4 taken out of DC wef 16:15 hrs.. |
| | | 24.05.18 | 21.46 | 25.05.18 | 23.59 | GT#4 came on FSNL due to AVR fault and subsequent tripping of GCB. Unit was test synch at 22:33 hrs.and stopped at 22:44 hrs due to SLDC backdown. |
| | | 14.07.18 | 10.00 | 14.07.18 | 14.00 | Normalization of 6.6kV System Mod#2 |
| | | 03.10.18 | 12.20 | 03.10.18 | 13.50 | Low lube oil pressure |
| | | 03.10.18 | 17.36 | 03.10.18 | 19.44 | |
| | | 23.10.18 | 19.06 | 23.10.18 | 20.24 | Rotor earth fault |

| Unit | Capacity in MW | Outage | | Synchronization | | Reason of Outage |
|-------|----------------|----------|-------|-----------------|-------|--|
| | | Date | Time | Date | Time | |
| STG-2 | 254 | 01.04.18 | 00.00 | 30.04.18 | 23.59 | STG#2 tripped on Bucholz relay operated. Transformer is under revival. |
| | | 01.10.18 | 14.32 | 01.10.18 | 15.05 | Condenser vacuum very low |
| | | 03.10.18 | 12.20 | 03.10.18 | 13.50 | Low lube oil pressure |
| | | 03.10.18 | 17.36 | 03.10.18 | 19.44 | |
| | | 23.10.18 | 19.06 | 23.10.18 | 20.24 | Rotor earth fault |

(F) RITHALA POWER STATION

| Unit | Capacity in MW | Outage | | Synchronization | | Reason of Outage |
|------|----------------|----------|-------|-----------------|-------|--|
| | | Date | Time | Date | Time | |
| 1 | 31.8 | 19.03.13 | 17:32 | 31.10.18 | 23.59 | Stopped due to low demand and high frequency |

| Unit | Capacity in MW | Outage | | Synchronization | | Reason of Outage |
|------|----------------|----------|-------|-----------------|-------|--|
| | | Date | Time | Date | Time | |
| 2 | 31.8 | 07.06.13 | 22:41 | 31.10.18 | 23.59 | Stopped due to low demand and high frequency |

| Unit | Capacity in MW | Outage | | Synchronization | | Reason of Outage |
|------|----------------|----------|-------|-----------------|-------|--|
| | | Date | Time | Date | Time | |
| STG | 31.8 | 07.06.13 | 22:38 | 31.10.18 | 23.59 | Stopped due to low demand and high frequency |

4 ALLOCATION OF POWER TO DELHI

A) Time block 00.00hrs. to 24.00hrs. @ 0% allocation from Unallocated Quota from 01.04.2017

| Name of the Stn | Installed capacity | Total Un-allocated | Basic Allocation | Basic Allocation at periphery | Allocation out of Unallocated Quota | Allocation out of Un-allocation Quota at Delhi periphery | Total allocation at Delhi periphery |
|--|--------------------|--------------------|------------------|-------------------------------|-------------------------------------|--|-------------------------------------|
| 1 | 2 | 3 | 4 | 5 | 6 | 7 | (8)=(5)+(7) |
| NTPC STATIONS | | | | | | | |
| Singrauli STPS | 2000 | 300 | 150 | 130 | 0 | 0 | 130 |
| Rihand-I | 1000 | 150 | 100 | 87 | 0 | 0 | 87 |
| Rihand Stage -II | 1000 | 150 | 126 | 109 | 0 | 0 | 109 |
| Rihand Stage -III | 1000 | 150 | 132 | 115 | 0 | 0 | 115 |
| ANTA GPS | 419 | 63 | 44 | 41 | 0 | 0 | 41 |
| Auriya GPS | 663.36 | 99 | 72 | 67 | 0 | 0 | 67 |
| Dadri GPS | 829.78 | 129 | 91 | 85 | 0 | 0 | 85 |
| Dadri NCTPS (Th) | 840 | 0 | 756 | 657 | 0 | 0 | 657 |
| Dadri NCTPS (Th) Stage-II | 980 | 147 | 735 | 639 | 0 | 0 | 639 |
| Unchahaar-I TPS | 420 | 20 | 24 | 21 | 0 | 0 | 21 |
| Unchahaar-II TPS | 420 | 63 | 47 | 41 | 0 | 0 | 41 |
| Unchahaar-III TPS | 210 | 31 | 29 | 25 | 0 | 0 | 25 |
| TOTAL | 9782 | 1302 | 2306 | 2016 | 0 | 0 | 2016 |
| NHPC | | | | | | | |
| Baira Suil HPS | 180 | 0 | 20 | 19 | 0 | 0 | 19 |
| Salal HPS | 690 | 0 | 80 | 76 | 0 | 0 | 76 |
| Tanakpur HEP | 94 | 0 | 12 | 11 | 0 | 0 | 11 |
| Chamera HEP | 540 | 0 | 43 | 41 | 0 | 0 | 41 |
| Chamera-II HEP | 300 | 54 | 40 | 38 | 0 | 0 | 38 |
| Chamera-III HEP | 231 | 35 | 29 | 28 | 0 | 0 | 28 |
| URI-I HEP | 480 | 0 | 53 | 50 | 0 | 0 | 50 |
| URI-II HEP | 240 | 0 | 32 | 31 | 0 | 0 | 31 |
| Sewa HEP | 120 | 18 | 16 | 15 | 0 | 0 | 15 |
| Dhaulti Ganga HEP | 280 | 42 | 37 | 35 | 0 | 0 | 35 |
| Dulhasti HEP | 390 | 58 | 50 | 48 | 0 | 0 | 48 |
| Parbati-III HEP | 520 | 66 | 66 | 63 | 0 | 0 | 63 |
| TOTAL | 4065 | 272 | 479 | 455 | 0 | 0 | 455 |
| NPC | | | | | | | |
| Narora APS | 440 | 64 | 47 | 41 | 0 | 0 | 41 |
| RAPP (C) | 440 | 64 | 56 | 49 | 0 | 0 | 49 |
| TOTAL | 880 | 128 | 103 | 89 | 0 | 0 | 89 |
| SJVNL | | | | | | | |
| Nathpa Jhakri HEP | 1500 | 149 | 142 | 135 | 0 | 0 | 135 |
| THDC | | | | | | | |
| Tehri Hydro | 1000 | 99 | 63 | 60 | 0 | 0 | 60 |
| Koteshwar HEP | 400 | 40 | 39 | 37 | 0 | 0 | 37 |
| TOTAL | 1400 | 139 | 102 | 97 | 0 | 0 | 97 |
| Total | 17627 | 1990 | 3132 | 2793 | 0 | 0 | 2793 |
| Allocation from ER and Tala HEP | | | | | | | |
| Farakka | 1600 | 0 | 22 | 19 | 0 | 0 | 19 |
| Kahalgaon | 840 | 0 | 51 | 43 | 0 | 0 | 43 |
| Talchar | 1000 | 0 | 0 | 0 | 0 | 0 | 0 |
| Tala HEP | 1020 | 153 | 30 | 25 | 0 | 0 | 25 |
| Kahalgaon-II | 1500 | 0 | 157 | 131 | 0 | 0 | 131 |
| Total ER | 5960 | 153 | 261 | 217 | 0 | 0 | 217 |
| Joint Venture | | | | | | | |
| Jhajjar TPS | 1500 | 114 | 693 | 622 | 0 | 0 | 622 |
| Ultra Mega Projects | | | | | | | |
| Sasan | 3960 | 0 | 446 | 400 | 0 | 0 | 400 |
| Grand Total | 29047 | 2257 | 4531 | 4032 | 0 | 0 | 4032 |

5 ALLOCATION OF POWER TO DISCOMS

A) ALLOCATION OF POWER TO VARIOUS LICENCEES AS PER ORDER OF DERC AND DECISION OF GNCTD FOR ALLOCATION OF CENTRAL SECTOR STATIONS (DADRI THERMAL & BTPS) AND STATE SECTOR GENERATING STATIONS w.e.f. 06.08.2013.

(Allocation In %)

(A) 10.00hrs. to 17.00hrs.

| SOURCES | LICENSEES | | | | | |
|--------------------------------------|-----------|------|--------|--------|--------|--------|
| | NDMC | MES | NDPL | BRPL | BYPL | TOTAL |
| 1. Central Sector without Dadri (Th) | 0 | 0 | 29.18 | 43.58 | 27.24 | 100.00 |
| 2. Dadri (Th) | 16.63 | 0 | 24.22 | 36.86 | 22.39 | 100.00 |
| 3. BTPS | 17.73 | 7.09 | 21.81 | 33.2 | 20.17 | 100.00 |
| 4. RPH | 0 | 0 | 29.025 | 44.133 | 26.842 | 100.00 |
| 5. GT | 0 | 0 | 29.02 | 44.16 | 26.82 | 100.00 |
| 6. Pragati | 30.3 | 0 | 20.22 | 30.78 | 18.7 | 100.00 |
| 7. DVC | 0 | 0 | 29.18 | 43.58 | 27.24 | 100.00 |
| 8. BAWANA CCGT* | 7.30 | 1.82 | 20.688 | 30.888 | 19.304 | 80.00 |

(B) 00.00hrs. to 10.00hrs. and 17.00hrs. to 24.00hrs.

| SOURCES | LICENSEES | | | | | |
|--------------------------------------|-----------|------|--------|--------|--------|--------|
| | NDMC | MES | NDPL | BRPL | BYPL | TOTAL |
| 1. Central Sector without Dadri (Th) | 0 | 0 | 29.18 | 43.58 | 27.24 | 100.00 |
| 2. Dadri (Th) | 16.53 | 0 | 24.22 | 36.86 | 22.39 | 100.00 |
| 3. BTPS | 17.73 | 7.09 | 21.81 | 33.2 | 20.17 | 100.00 |
| 4. RPH | 0 | 0 | 29.025 | 44.133 | 26.842 | 100.00 |
| 5. GT | 0 | 0 | 29.02 | 44.16 | 26.82 | 100.00 |
| 6. Pragati | 30.3 | 0 | 20.22 | 30.78 | 18.7 | 100.00 |
| 7. DVC | 0 | 0 | 29.18 | 43.58 | 27.24 | 100.00 |
| 8. BAWANA CCGT* | 7.30 | 1.82 | 20.688 | 30.888 | 19.304 | 80.00 |

* 20% POWER OF BAWANA CCGT ALLOCATED TO HARYANA (10%) & PUNJAB (10%)

6 POWER AVAILABILITY-DEMAND POSITION AT THE TIME OF PEAK DEMAND MET DURING OCT 2018

| Date | Time of peak demand | Generation within Delhi | | | | | | | | | | Import from the Grid | Schedule from the Grid | OD(-)/UD(+) | Demand met | Shedding | Un-Restricted Demand |
|------|---------------------|-------------------------|-----|------|---------|--------|--------|------------|--------|------|-----------------|----------------------|------------------------|-----------------|-----------------|----------|----------------------|
| | | RP H | GT | PPCL | Rithala | Bawana | Towmcl | East Delhi | DMS WL | BTPS | Total | | | | | | |
| (1) | (2) | (3) | (4) | (5) | (6) | (7) | (8) | | | | (9)= (3) to (8) | (10) | (11) | (12)= (11)-(10) | (13)= (11)+(12) | (14) | (15)= (13)+(14) |
| 1 | 15.31.29 | 0 | 34 | 143 | 0 | 634 | 9 | 5 | 13 | 360 | 1198 | 3370 | 3268 | 102 | 4568 | 0 | 4568 |
| 2 | 00.00.05 | 0 | 36 | 149 | 0 | 681 | 11 | 3 | 13 | 297 | 1190 | 2977 | 2925 | 52 | 4167 | 0 | 4167 |
| 3 | 15.40.53 | 0 | 31 | 142 | 0 | 841 | 6 | 4 | 10 | 358 | 1392 | 3238 | 3160 | 78 | 4630 | 0 | 4630 |
| 4 | 15.35.50 | 0 | 34 | 142 | 0 | 869 | 10 | -1 | 14 | 361 | 1429 | 3275 | 3063 | 212 | 4704 | 70 | 4774 |
| 5 | 11.42.49 | 0 | 116 | 294 | 0 | 790 | 19 | 7 | 13 | 305 | 1544 | 3169 | 3039 | 130 | 4713 | 0 | 4713 |
| 6 | 18.45.22 | 0 | 34 | 153 | 0 | 683 | 17 | 4 | 7 | 302 | 1200 | 3091 | 2999 | 92 | 4291 | 3 | 4294 |
| 7 | 19.01.00 | 0 | 35 | 153 | 0 | 697 | 19 | 4 | 11 | 298 | 1217 | 2758 | 2765 | -7 | 3975 | 0 | 3975 |
| 8 | 18.26.36 | 0 | 35 | 151 | 0 | 681 | 17 | 6 | 18 | 308 | 1216 | 3158 | 3056 | 102 | 4374 | 0 | 4374 |
| 9 | 18.34.05 | 0 | 36 | 151 | 0 | 704 | 18 | 4 | 13 | 314 | 1240 | 3242 | 3180 | 62 | 4482 | 0 | 4482 |
| 10 | 15.01.39 | 0 | 34 | 149 | 0 | 709 | 18 | 5 | 16 | 311 | 1242 | 3358 | 3164 | 194 | 4600 | 0 | 4600 |
| 11 | 11.41.05 | 0 | 68 | 152 | 0 | 545 | 16 | 5 | 14 | 349 | 1149 | 3333 | 3169 | 164 | 4482 | 10 | 4492 |
| 12 | 18.21.23 | 0 | 72 | 155 | 0 | 503 | 17 | 6 | 11 | 307 | 1071 | 3102 | 2958 | 144 | 4173 | 0 | 4173 |
| 13 | 18.32.20 | 0 | 71 | 156 | 0 | 488 | 14 | -1 | 15 | 299 | 1042 | 2783 | 2629 | 154 | 3825 | 0 | 3825 |
| 14 | 18.28.10 | 0 | 71 | 155 | 0 | 487 | 17 | 7 | 10 | 307 | 1054 | 2468 | 2495 | -27 | 3522 | 0 | 3522 |
| 15 | 18.32.34 | 0 | 73 | 154 | 0 | 446 | 18 | -1 | 8 | 142 | 840 | 3123 | 2960 | 163 | 3963 | 0 | 3963 |
| 16 | 18.15.48 | 0 | 73 | 152 | 0 | 512 | 15 | 7 | 10 | -4 | 765 | 3318 | 3266 | 52 | 4083 | 0 | 4083 |
| 17 | 18.28.57 | 0 | 76 | 154 | 0 | 484 | 19 | 8 | 4 | -3 | 742 | 3300 | 3311 | -11 | 4042 | 0 | 4042 |
| 18 | 18.19.29 | 0 | 76 | 154 | 0 | 568 | 10 | 6 | 5 | -3 | 816 | 3273 | 3303 | -30 | 4089 | 0 | 4089 |
| 19 | 11.17.41 | 0 | 73 | 155 | 0 | 598 | 18 | 6 | 14 | -3 | 861 | 2519 | 2467 | 52 | 3380 | 0 | 3380 |
| 20 | 18.21.58 | 0 | 40 | 155 | 0 | 518 | 18 | 7 | 15 | -3 | 750 | 3006 | 2951 | 55 | 3756 | 0 | 3756 |
| 21 | 18.36.22 | 0 | 40 | 157 | 0 | 530 | 18 | 7 | 12 | -3 | 761 | 2726 | 2710 | 16 | 3487 | 0 | 3487 |
| 22 | 18.34.29 | 0 | 2 | 157 | 0 | 432 | 18 | 9 | 3 | -3 | 618 | 3166 | 3073 | 93 | 3784 | 0 | 3784 |
| 23 | 18.16.55 | 0 | 35 | 157 | 0 | 708 | 12 | 9 | -2 | -3 | 916 | 2879 | 2950 | -71 | 3795 | 0 | 3795 |
| 24 | 18.21.51 | 0 | 33 | 156 | 0 | 595 | 14 | 8 | 15 | -3 | 818 | 3017 | 3006 | 11 | 3835 | 0 | 3835 |
| 25 | 18.20.44 | 0 | 35 | 156 | 0 | 481 | 18 | 9 | 17 | -3 | 713 | 3156 | 3072 | 84 | 3869 | 0 | 3869 |
| 26 | 18.16.39 | 0 | 35 | 157 | 0 | 499 | 17 | 8 | 14 | -3 | 727 | 3041 | 3136 | -95 | 3768 | 0 | 3768 |
| 27 | 18.08.41 | 0 | 32 | 155 | 0 | 544 | 19 | -1 | 13 | -3 | 759 | 2744 | 2740 | 4 | 3503 | 0 | 3503 |
| 28 | 18.32.21 | 0 | 32 | 155 | 0 | 544 | 17 | -1 | 13 | -3 | 757 | 2606 | 2542 | 64 | 3363 | 0 | 3363 |
| 29 | 18.24.55 | 0 | 109 | 156 | 0 | 542 | 16 | 8 | 12 | -3 | 840 | 2856 | 2816 | 40 | 3696 | 0 | 3696 |
| 30 | 10.34.33 | 0 | 40 | 158 | 0 | 489 | 16 | 7 | 13 | -3 | 720 | 3018 | 2846 | 172 | 3738 | 0 | 3738 |
| 31 | 18.17.38 | 0 | 40 | 156 | 0 | 755 | 17 | 9 | 9 | -3 | 983 | 2753 | 2708 | 45 | 3736 | 0 | 3736 |

POWER AVAILABILITY- DEMAND POSITION AT THE TIME OF MAXIMUM UNRESTRICTED DEMAND DURING OCT 2018

| Date | Time of peak demand | Generation within Delhi | | | | | | | | | | Import from the Grid | Schedule from the Grid | OD(-)/UD(+) | Demand met | Shedding | Un-Restricted Demand |
|------|---------------------|-------------------------|-----|------|---------|--------|--------|------------|--------|------|-----------------|----------------------|------------------------|-------------------|------------------|----------|----------------------|
| | | RP H | GT | PPCL | Rithala | Bawana | Towmcl | East Delhi | DMS WL | BTPS | Total | | | | | | |
| (1) | (2) | (3) | (4) | (5) | (6) | (7) | (8) | | | | (9)= (3) to (8) | (10) | (11) | (12)= (11) - (10) | (13)= (11)+ (12) | (14) | (15)= (13)+ (14) |
| 1 | 15.31.29 | 0 | 34 | 143 | 0 | 634 | 9 | 5 | 13 | 360 | 1198 | 3370 | 3268 | 102 | 4568 | 0 | 4568 |
| 2 | 00.00.05 | 0 | 36 | 149 | 0 | 681 | 11 | 3 | 13 | 297 | 1190 | 2977 | 2925 | 52 | 4167 | 0 | 4167 |
| 3 | 15.40.53 | 0 | 31 | 142 | 0 | 841 | 6 | 4 | 10 | 358 | 1392 | 3238 | 3160 | 78 | 4630 | 0 | 4630 |
| 4 | 15.35.50 | 0 | 34 | 142 | 0 | 869 | 10 | -1 | 14 | 361 | 1429 | 3275 | 3063 | 212 | 4704 | 70 | 4774 |
| 5 | 11.42.49 | 0 | 116 | 294 | 0 | 790 | 19 | 7 | 13 | 305 | 1544 | 3169 | 3039 | 130 | 4713 | 0 | 4713 |
| 6 | 18.45.22 | 0 | 34 | 153 | 0 | 683 | 17 | 4 | 7 | 302 | 1200 | 3091 | 2999 | 92 | 4291 | 3 | 4294 |
| 7 | 19.01.00 | 0 | 35 | 153 | 0 | 697 | 19 | 4 | 11 | 298 | 1217 | 2758 | 2765 | -7 | 3975 | 0 | 3975 |
| 8 | 18.26.36 | 0 | 35 | 151 | 0 | 681 | 17 | 6 | 18 | 308 | 1216 | 3158 | 3056 | 102 | 4374 | 0 | 4374 |
| 9 | 18.34.05 | 0 | 36 | 151 | 0 | 704 | 18 | 4 | 13 | 314 | 1240 | 3242 | 3180 | 62 | 4482 | 0 | 4482 |
| 10 | 15.01.39 | 0 | 34 | 149 | 0 | 709 | 18 | 5 | 16 | 311 | 1242 | 3358 | 3164 | 194 | 4600 | 0 | 4600 |
| 11 | 11.41.05 | 0 | 68 | 152 | 0 | 545 | 16 | 5 | 14 | 349 | 1149 | 3333 | 3169 | 164 | 4482 | 10 | 4492 |
| 12 | 18.21.23 | 0 | 72 | 155 | 0 | 503 | 17 | 6 | 11 | 307 | 1071 | 3102 | 2958 | 144 | 4173 | 0 | 4173 |
| 13 | 18.32.20 | 0 | 71 | 156 | 0 | 488 | 14 | -1 | 15 | 299 | 1042 | 2783 | 2629 | 154 | 3825 | 0 | 3825 |
| 14 | 18.28.10 | 0 | 71 | 155 | 0 | 487 | 17 | 7 | 10 | 307 | 1054 | 2468 | 2495 | -27 | 3522 | 0 | 3522 |
| 15 | 18.32.34 | 0 | 73 | 154 | 0 | 446 | 18 | -1 | 8 | 142 | 840 | 3123 | 2960 | 163 | 3963 | 0 | 3963 |
| 16 | 18.15.48 | 0 | 73 | 152 | 0 | 512 | 15 | 7 | 10 | -4 | 765 | 3318 | 3266 | 52 | 4083 | 0 | 4083 |
| 17 | 18.28.57 | 0 | 76 | 154 | 0 | 484 | 19 | 8 | 4 | -3 | 742 | 3300 | 3311 | -11 | 4042 | 0 | 4042 |
| 18 | 18.19.29 | 0 | 76 | 154 | 0 | 568 | 10 | 6 | 5 | -3 | 816 | 3273 | 3303 | -30 | 4089 | 0 | 4089 |
| 19 | 11.17.41 | 0 | 73 | 155 | 0 | 598 | 18 | 6 | 14 | -3 | 861 | 2519 | 2467 | 52 | 3380 | 0 | 3380 |
| 20 | 18.21.58 | 0 | 40 | 155 | 0 | 518 | 18 | 7 | 15 | -3 | 750 | 3006 | 2951 | 55 | 3756 | 0 | 3756 |
| 21 | 18.36.22 | 0 | 40 | 157 | 0 | 530 | 18 | 7 | 12 | -3 | 761 | 2726 | 2710 | 16 | 3487 | 0 | 3487 |
| 22 | 18.34.29 | 0 | 2 | 157 | 0 | 432 | 18 | 9 | 3 | -3 | 618 | 3166 | 3073 | 93 | 3784 | 0 | 3784 |
| 23 | 18.16.55 | 0 | 35 | 157 | 0 | 708 | 12 | 9 | -2 | -3 | 916 | 2879 | 2950 | -71 | 3795 | 0 | 3795 |
| 24 | 18.21.51 | 0 | 33 | 156 | 0 | 595 | 14 | 8 | 15 | -3 | 818 | 3017 | 3006 | 11 | 3835 | 0 | 3835 |
| 25 | 18.20.44 | 0 | 35 | 156 | 0 | 481 | 18 | 9 | 17 | -3 | 713 | 3156 | 3072 | 84 | 3869 | 0 | 3869 |
| 26 | 18.16.39 | 0 | 35 | 157 | 0 | 499 | 17 | 8 | 14 | -3 | 727 | 3041 | 3136 | -95 | 3768 | 0 | 3768 |
| 27 | 18.08.41 | 0 | 32 | 155 | 0 | 544 | 19 | -1 | 13 | -3 | 759 | 2744 | 2740 | 4 | 3503 | 0 | 3503 |
| 28 | 18.32.21 | 0 | 32 | 155 | 0 | 544 | 17 | -1 | 13 | -3 | 757 | 2606 | 2542 | 64 | 3363 | 0 | 3363 |
| 29 | 18.24.55 | 0 | 109 | 156 | 0 | 542 | 16 | 8 | 12 | -3 | 840 | 2856 | 2816 | 40 | 3696 | 0 | 3696 |
| 30 | 10.34.33 | 0 | 40 | 158 | 0 | 489 | 16 | 7 | 13 | -3 | 720 | 3018 | 2846 | 172 | 3738 | 0 | 3738 |
| 31 | 18.17.38 | 0 | 40 | 156 | 0 | 755 | 17 | 9 | 9 | -3 | 983 | 2753 | 2708 | 45 | 3736 | 0 | 3736 |

SOURCEWISE SCHEDULED DRAWL FROM NORTHERN GRID AS WELL AS AVAILABILITY WITHIN DELHI FOR OCT 2018

A) AVAILABILITY FROM GENCO AND PRAGATI STNs. (all fig in MUs)

| | |
|---|---------|
| A (i) RPH | 0.000 |
| (ii) GT+STG | 41.138 |
| (iii) PRAGATI | 124.489 |
| (iv) RITHALA | 0.000 |
| (v) BAWANA CCGT | 440.062 |
| (vi) Timarpur – Okhla | 14.355 |
| EDWPCL | 5.509 |
| DMSWL | 10.410 |
| TOTAL | 635.963 |
| B) AVAILABILITY FROM BTPS | 109.679 |
| C) AUXILIARY CONSUMPTION OF GENERATING STNs. EXCLUDING BTPS | 24.784 |
| D) NET GENERATION AVAILABLE WITHIN DELHI(A+B-C) | 720.858 |

B) SOURCE WISE SCHEDULED DRAWL FROM THE NORTHERN GRID

| NAME OF THE STATION | AVAILABILITY AT POWER PLANT | AVAILABILITY AT DELHI PERIPHERY | ALLOCATION MADE BY NRLDC AT POWER PLANT | ALLOCATION MADE BY NRLDC AT DELHI PERIPHERY |
|---------------------|-----------------------------|---------------------------------|---|---|
| B/SUIL | 2.476 | 2.396 | 2.476 | 2.396 |
| SALAL | 19.496 | 18.966 | 19.496 | 18.966 |
| SASAN | 281.332 | 272.180 | 280.879 | 271.742 |
| TANKAPUR | 7.000 | 6.793 | 7.000 | 6.793 |
| CHAMERA | 14.526 | 14.169 | 14.526 | 14.169 |
| CHAMERA -II | 16.115 | 15.718 | 16.115 | 15.718 |
| CHAMERA -III | 9.981 | 9.735 | 9.981 | 9.735 |
| DHAULIGANGA | 11.632 | 11.345 | 11.632 | 11.345 |
| SEWA -2 | 3.604 | 3.506 | 3.604 | 3.506 |
| URI | 13.753 | 13.413 | 13.753 | 13.413 |
| URI-II | 10.322 | 10.093 | 10.322 | 10.093 |
| KOLDAM | 0.000 | 0.000 | 0.000 | 0.000 |
| KOTESHWAR | 6.202 | 6.019 | 6.202 | 6.019 |
| PARBATI3 | 5.442 | 5.295 | 5.442 | 5.295 |
| RAMPUR | 0.000 | 0.000 | 0.000 | 0.000 |
| MUNDRA_UMPP | 0.000 | 0.000 | 0.000 | 0.000 |
| ANTA (GAS) | 0.869 | 0.839 | 0.401 | 0.387 |
| ANTA (RLNG) | 28.971 | 27.973 | 0.163 | 0.158 |
| ANTA (LIQUID) | 0.000 | 0.000 | 0.000 | 0.000 |
| DADRI (GAS) | 3.460 | 3.394 | 1.155 | 1.133 |
| DADRI (RLNG) | 59.286 | 58.120 | 0.238 | 0.234 |
| DADRI (LIQUID) | 0.000 | 0.000 | 0.000 | 0.000 |
| AURAIYA (GAS) | 3.552 | 3.446 | 1.094 | 1.061 |
| AURAIYA (RLNG) | 46.278 | 44.913 | 0.103 | 0.101 |
| AURAIYA (LIQUID) | 0.131 | 0.127 | 0.000 | 0.000 |
| SINGRAULI | 97.389 | 94.037 | 95.313 | 92.035 |
| SINGRAULI_HYDRO | 0.000 | 0.000 | 0.000 | 0.000 |
| RIHAND -I | 59.147 | 57.116 | 56.139 | 54.216 |
| RIHAND -II | 88.354 | 85.309 | 87.324 | 84.317 |
| RIHAND -III | 46.018 | 44.432 | 44.385 | 42.858 |
| UNCHAHAR-I | 15.516 | 15.134 | 14.396 | 14.042 |
| UNCHAHAR-II | 28.234 | 27.545 | 26.727 | 26.076 |
| UNCHAHAR-III | 19.635 | 19.152 | 18.491 | 18.037 |
| UNCHAHAR-IV | 0.000 | 0.000 | 0.000 | 0.000 |
| DADRI (TH) | 377.524 | 370.089 | 275.362 | 269.962 |
| DADRI (TH) STAGE-II | 489.380 | 479.723 | 428.956 | 420.520 |
| NAPP | 31.135 | 30.216 | 31.135 | 30.216 |
| RAPP 'B' | 0.000 | 0.000 | 0.000 | 0.000 |
| RAPP 'C' | 31.425 | 30.467 | 31.298 | 30.345 |
| NATHPA JHAKRI | 43.191 | 41.914 | 43.191 | 41.914 |
| DULASTI | 28.111 | 27.348 | 28.111 | 27.348 |

| NAME OF THE STATION | AVAILABILITY AT POWER PLANT | AVAILABILITY AT DELHI PERIPHERY | ALLOCATION MADE BY NRLDC AT POWER PLANT | ALLOCATION MADE BY NRLDC AT DELHI PERIPHERY |
|-------------------------------|-----------------------------|---------------------------------|---|---|
| TEHRI | 12.169 | 11.810 | 12.169 | 11.810 |
| JHAJJAR | 307.150 | 301.121 | 284.050 | 278.495 |
| KHELGAON | 31.234 | 30.564 | 29.178 | 28.552 |
| KHELGAON-II | 91.035 | 89.084 | 84.298 | 82.493 |
| FARAKA | 12.750 | 12.477 | 11.972 | 11.716 |
| TALA | 7.286 | 7.094 | 7.286 | 7.094 |
| TALCHER | 0.000 | 0.000 | 0.000 | 0.000 |
| DVC | 229.583 | 228.068 | 228.068 | 226.377 |
| CHATTISHGARH | 0.000 | 0.000 | 0.000 | 0.000 |
| ADHPL (KULLU) | 0.000 | 0.000 | 0.000 | 0.000 |
| MEGHALAYA | 0.903 | 0.895 | 0.895 | 0.889 |
| MAHARASHTRA | 0.000 | 0.000 | 0.000 | 0.000 |
| ANDHRA PRADESH | 0.000 | 0.000 | 0.000 | 0.000 |
| MADHYA PRADESH | 0.000 | 0.000 | 0.000 | 0.000 |
| METHON POWER(NDPL)LT-06 | 162.069 | 160.984 | 160.984 | 159.799 |
| DVC MEJIA (LT-08)(BYPL) | 2.479 | 2.462 | 2.462 | 2.447 |
| URS | 0.354 | 0.352 | 0.354 | 0.352 |
| JAMMU & KASHMIR | 1.711 | 1.686 | 1.686 | 1.673 |
| HIMACHAL PRADESH | 23.248 | 22.786 | 22.786 | 22.618 |
| JHARKHAND | 4.606 | 4.587 | 4.587 | 4.553 |
| MIZORAM | 5.749 | 5.659 | 5.659 | 5.617 |
| HARYANA | 0.347 | 0.343 | 0.343 | 0.341 |
| HIMACHAL PRADESH(LT-59) | 3.682 | 3.610 | 3.610 | 3.584 |
| HARYANA (LT-05) | 52.338 | 51.699 | 51.699 | 51.327 |
| TUTICORIN (TAMIL) | 2.211 | 2.194 | 2.194 | 2.179 |
| WEST BENGAL | 0.000 | 0.000 | 0.000 | 0.000 |
| ORISSA MT-20 JITPL -DVC | 3.388 | 3.349 | 3.349 | 3.325 |
| TAMILNAIDU | 0.000 | 0.000 | 0.000 | 0.000 |
| MANIPUR | 0.000 | 0.000 | 0.000 | 0.000 |
| RAJASTHAN(SOLAR) BRPL-LT36 | 2.886 | 2.822 | 2.822 | 2.801 |
| RAJASTHAN(SOLAR) BYPL - LT-35 | 2.878 | 2.814 | 2.814 | 2.793 |
| RAJASTHAN(SOLAR) TPDDL LT-31 | 2.855 | 2.791 | 2.791 | 2.770 |
| TO JHARKHAND | 0.000 | 0.000 | 0.000 | 0.000 |
| TO ANDHRA | -50.592 | -51.011 | -51.011 | -51.652 |
| TO MADHYA PRADESH | -43.043 | -43.557 | -43.557 | -44.088 |
| TO WEST BENGAL | -0.514 | -0.517 | -0.517 | -0.524 |
| TO ASSAM | -0.088 | -0.090 | -0.090 | -0.091 |
| TO J&K | 0.000 | 0.000 | 0.000 | 0.000 |
| TO TAMILNADU | -0.787 | -0.796 | -0.796 | -0.806 |
| TO GUJRAT | -3.737 | -3.796 | -3.796 | -3.841 |
| TO MEGHALAYA | 0.000 | 0.000 | 0.000 | 0.000 |
| TO MANIPUR | 0.000 | 0.000 | 0.000 | 0.000 |
| BTPS TO MP | 0.000 | 0.000 | 0.000 | 0.000 |
| TO HIMACHAL PRADESH | -59.267 | -60.441 | -60.441 | -61.172 |
| TO MAHARASHTRA | -1.078 | -1.094 | -1.094 | -1.108 |
| POWER EXCHANGE(IEX) | 2.372 | 2.355 | 2.372 | 2.355 |
| TO POWER EXCHANGE (IEX) | -428.456 | -433.802 | -428.456 | -433.802 |
| POWER EXCHANGE(PX) | 0.000 | 0.000 | 0.000 | 0.000 |
| TO POWER EXCHANGE (PX) | 0.000 | 0.000 | 0.000 | 0.000 |
| TO SHARE PROJECT (HARYANA) | 2.855 | 2.891 | 2.855 | 2.891 |
| TO SHARE PROJECT (PUNJAB) | 2.104 | 2.131 | 2.104 | 2.131 |
| TOTAL | 2282.170 | 2212.447 | 1929.042 | 1868.046 |

C) AGENCY WISE BREAKUP OF ENERGY SCHEDULED DRAWL FROM THE GRID

| NAME OF THE STATION | AVAILABILITY AT POWER PLANT | AVAILABILITY AT DELHI PERIPHERY | ALLOCATION MADE BY NRLDC AT POWER PLANT | ALLOCATION MADE BY NRLDC AT DELHI PERIPHERY |
|----------------------------|-----------------------------|---------------------------------|---|---|
| NTPC - NR | 1363.745 | 1331.349 | 1050.249 | 1025.137 |
| NTPC - ER | 135.019 | 132.126 | 125.448 | 122.761 |
| NHPC | 142.458 | 138.777 | 142.458 | 138.777 |
| NPC | 62.560 | 60.684 | 62.433 | 60.561 |
| SASAN | 281.332 | 272.180 | 280.879 | 271.742 |
| KOTESHWAR | 6.202 | 6.019 | 6.202 | 6.019 |
| MUNDRA_UMPP | 0.000 | 0.000 | 0.000 | 0.000 |
| NATHPA JHAKRI | 43.191 | 41.914 | 43.191 | 41.914 |
| TEHRI | 12.169 | 11.810 | 12.169 | 11.810 |
| TALA | 7.286 | 7.094 | 7.286 | 7.094 |
| JHAJJAR | 307.150 | 301.121 | 284.050 | 278.495 |
| TALCHER | 0.000 | 0.000 | 0.000 | 0.000 |
| RAJASTHAN SOLAR(BRPL)T-36 | 2.886 | 2.822 | 2.822 | 2.801 |
| RAJASTHAN SOLAR(BYPL)T-35 | 2.878 | 2.814 | 2.814 | 2.793 |
| RAJASTHAN SOLAR(TPDDL)T-31 | 2.855 | 2.791 | 2.791 | 2.770 |
| DVC | 229.583 | 228.068 | 228.068 | 226.377 |
| CHATTISHGARH | 0.000 | 0.000 | 0.000 | 0.000 |
| ADHPL (KULLU) | 0.000 | 0.000 | 0.000 | 0.000 |
| MEGHALAYA | 0.903 | 0.895 | 0.895 | 0.889 |
| MAHARASHTRA | 0.000 | 0.000 | 0.000 | 0.000 |
| ANDHRA PRADESH | 0.000 | 0.000 | 0.000 | 0.000 |
| MADHYA PRADESH | 0.000 | 0.000 | 0.000 | 0.000 |
| METHON POWER (NDPL)-LT-06 | 162.069 | 160.984 | 160.984 | 159.799 |
| DVC MEJIA (LT-08)(BYPL) | 2.479 | 2.462 | 2.462 | 2.447 |
| URS | 0.354 | 0.352 | 0.354 | 0.352 |
| JAMMU & KASHMIR | 1.711 | 1.686 | 1.686 | 1.673 |
| HIMACHAL PRADESH | 23.248 | 22.786 | 22.786 | 22.618 |
| JHARKHAND | 4.606 | 4.587 | 4.587 | 4.553 |
| MIZORAM | 5.749 | 5.659 | 5.659 | 5.617 |
| HARYANA | 0.347 | 0.343 | 0.343 | 0.341 |
| HIMACHAL PRADESH (LT-59) | 3.682 | 3.610 | 3.610 | 3.584 |
| HARYANA (LT -05) | 52.338 | 51.699 | 51.699 | 51.327 |
| TUTICORIN (TAMIL) | 2.211 | 2.194 | 2.194 | 2.179 |
| WEST BENGAL | 0.000 | 0.000 | 0.000 | 0.000 |
| ORISSA MT-20 JITPL -DVC | 3.388 | 3.349 | 3.349 | 3.325 |
| TAMILNAIDU | 0.000 | 0.000 | 0.000 | 0.000 |
| MANIPUR | 0.000 | 0.000 | 0.000 | 0.000 |
| POWER EXCHANGE(IEX) | 2.372 | 2.355 | 2.372 | 2.355 |
| POWER EXCHANGE(PX) | 0.000 | 0.000 | 0.000 | 0.000 |
| TOTAL | 2864.772 | 2802.529 | 2513.841 | 2460.106 |

D) AGENCY WISE BREAKUP OF ENERGY SCHEDULED BY NRLDC FOR EXPORT TO OTHER UTILITIES FROM DTL

| NAME OF THE STATION | AVAILABILITY AT POWER PLANT | AVAILABILITY AT PERIPHERY | ALLOCATION MADE BY NRLDC AT POWER PLANT | ALLOCATION MADE BY NRLDC AT POWER PERIPHERY |
|--|--------------------------------------|---------------------------|---|---|
| TO JHARKHAND | 0.000 | 0.000 | 0.000 | 0.000 |
| TO ANDHRA | -50.592 | -51.011 | -51.011 | -51.652 |
| TO MADHYA PRADESH | -43.043 | -43.557 | -43.557 | -44.088 |
| TO WEST BENGAL | -0.514 | -0.517 | -0.517 | -0.524 |
| TO J&K | 0.000 | 0.000 | 0.000 | 0.000 |
| TO ASSAM | -0.088 | -0.090 | -0.090 | -0.091 |
| TO TAMILNADU | -0.787 | -0.796 | -0.796 | -0.806 |
| TO GUJRAT | -3.737 | -3.796 | -3.796 | -3.841 |
| TO MEGHALAYA | 0.000 | 0.000 | 0.000 | 0.000 |
| TO MANIPUR | 0.000 | 0.000 | 0.000 | 0.000 |
| BTPS TO MP | 0.000 | 0.000 | 0.000 | 0.000 |
| TO HIMACHAL PRADESH | -59.267 | -60.441 | -60.441 | -61.172 |
| TO MAHARASHTRA | -1.078 | -1.094 | -1.094 | -1.108 |
| TO POWER EXCHANGE (IEX) | -428.456 | -433.802 | -428.456 | -433.802 |
| TO POWER EXCHANGE (PX) | 0.000 | 0.000 | 0.000 | 0.000 |
| TO SHARE PROJECT (HARYANA) | 2.855 | 2.891 | 2.855 | 2.891 |
| TO SHARE PROJECT (PUNJAB) | 2.104 | 2.131 | 2.104 | 2.131 |
| TOTAL | -582.601 | -590.082 | -584.799 | -592.060 |
| TOTAL SCHEDULED DRAWAL FROM THE GRID | 2282.170 | 2212.447 | 1929.042 | 1868.046 |
| TOTAL CONSUMPTION INCLUDING AUX. OF GENERATING STNs. EXCLUDING BTPS | | | | 2525.177 |
| NET CONSUMPTION | | | | 2500.393 |
| AVAILABILITY WITHIN DELHI | | | | 720.858 |
| ACTUAL DRAWAL FROM THE GRID | | | | 1779.535 |
| OVER DRAWAL (+)/UNDER DRAWAL (-) FROM THE GRID ON THE BASIS OF SCHEDULED ALLOCATION MADE BY NRLDC TO DELHI AT PERIPHERY | | | | -81.511 |
| LOAD SHEDDING | | | | 0.995 |
| UNRESTRICTED DEMAND (GROSS) | | | | 2526.172 |
| UNRESTRICTED DEMAND (NET) | | | | 2501.388 |
| MAX. NET CONSUMPTION | | | | 99.609 ON 04.10.2018 |
| MAX. LOAD SHEDDING | | | | 117MW ON 04.10.2018 AT 16.47HRS. |
| PEAK LOAD | Peak Demand during the month | | | SHEDDING AT PEAK TIME |
| DAY PEAK | 4713MW AT 11.42.49 HRS ON 05.10.2018 | | | 0 MW |
| EVENING PEAK | 4606MW AT 19.00.00HRS ON 04.10.2018 | | | 0 MW |
| P.L.F. OF GENCO AND PRAGATI STNs. | | RPH | | 0.00% |
| | | GT | | 20.48% |
| | | PRAGATI | | 50.70% |
| | | RITHALA | | 0.00% |
| | | BAWANA | | 43.14% |
| | | Timarpur Okhla | | 120.59% |
| | | EDWPCL | | 61.70% |
| | | DMSWL | | 58.30% |

9 SHEDDING DETAILS DURING THE MONTH OF OCT 2018.

ALL FIGURES IN MUs

| DATE | No. of Under Freq. Relay Operated | Shedding due to under frequency relay operation in MUs | | | | | Shedding due to Grid Restrictions (Over drawl / low freq.) | | | | |
|--------------|-----------------------------------|--|--------------|--------------|--------------|--------------|--|--------------|--------------|--------------|--------------|
| | | BSES | | NDPL | NDMC | TOTAL | BSES | | NDPL | NDMC | MES |
| | | BYPL | BRPL | | | | BYPL | BRPL | | | |
| 1 | 2 | 3 | 4 | 5 | 6 | 7=3 to 6 | 8 | 9 | 10 | 11 | 12 |
| 01.Oct.18 | 0 | 0.000 | 0.000 | 0.000 | 0.000 | 0.000 | 0.000 | 0.000 | 0.000 | 0.000 | 0.000 |
| 02.Oct.18 | 0 | 0.000 | 0.000 | 0.000 | 0.000 | 0.000 | 0.000 | 0.000 | 0.000 | 0.000 | 0.000 |
| 03.Oct.18 | 0 | 0.000 | 0.000 | 0.000 | 0.000 | 0.000 | 0.000 | 0.000 | 0.162 | 0.000 | 0.000 |
| 04.Oct.18 | 0 | 0.000 | 0.000 | 0.000 | 0.000 | 0.000 | 0.000 | 0.000 | 0.150 | 0.000 | 0.000 |
| 05.Oct.18 | 0 | 0.000 | 0.000 | 0.000 | 0.000 | 0.000 | 0.000 | 0.000 | 0.023 | 0.000 | 0.000 |
| 06.Oct.18 | 0 | 0.000 | 0.000 | 0.000 | 0.000 | 0.000 | 0.000 | 0.000 | 0.000 | 0.000 | 0.000 |
| 07.Oct.18 | 0 | 0.000 | 0.000 | 0.000 | 0.000 | 0.000 | 0.000 | 0.000 | 0.000 | 0.000 | 0.000 |
| 08.Oct.18 | 0 | 0.000 | 0.000 | 0.000 | 0.000 | 0.000 | 0.000 | 0.000 | 0.000 | 0.000 | 0.000 |
| 09.Oct.18 | 0 | 0.000 | 0.000 | 0.000 | 0.000 | 0.000 | 0.000 | 0.000 | 0.000 | 0.000 | 0.000 |
| 10.Oct.18 | 0 | 0.000 | 0.000 | 0.000 | 0.000 | 0.000 | 0.000 | 0.000 | 0.000 | 0.000 | 0.000 |
| 11.Oct.18 | 0 | 0.000 | 0.000 | 0.000 | 0.000 | 0.000 | 0.000 | 0.000 | 0.000 | 0.000 | 0.000 |
| 12.Oct.18 | 0 | 0.000 | 0.000 | 0.000 | 0.000 | 0.000 | 0.000 | 0.000 | 0.000 | 0.000 | 0.000 |
| 13.Oct.18 | 0 | 0.000 | 0.000 | 0.000 | 0.000 | 0.000 | 0.000 | 0.000 | 0.000 | 0.000 | 0.000 |
| 14.Oct.18 | 0 | 0.000 | 0.000 | 0.000 | 0.000 | 0.000 | 0.000 | 0.000 | 0.000 | 0.000 | 0.000 |
| 15.Oct.18 | 0 | 0.000 | 0.000 | 0.000 | 0.000 | 0.000 | 0.000 | 0.000 | 0.000 | 0.000 | 0.000 |
| 16.Oct.18 | 0 | 0.000 | 0.000 | 0.000 | 0.000 | 0.000 | 0.000 | 0.000 | 0.000 | 0.000 | 0.000 |
| 17.Oct.18 | 0 | 0.000 | 0.000 | 0.000 | 0.000 | 0.000 | 0.000 | 0.000 | 0.000 | 0.000 | 0.000 |
| 18.Oct.18 | 0 | 0.000 | 0.000 | 0.000 | 0.000 | 0.000 | 0.000 | 0.000 | 0.000 | 0.000 | 0.000 |
| 19.Oct.18 | 0 | 0.000 | 0.000 | 0.000 | 0.000 | 0.000 | 0.000 | 0.000 | 0.000 | 0.000 | 0.000 |
| 20.Oct.18 | 0 | 0.000 | 0.000 | 0.000 | 0.000 | 0.000 | 0.000 | 0.000 | 0.000 | 0.000 | 0.000 |
| 21.Oct.18 | 0 | 0.000 | 0.000 | 0.000 | 0.000 | 0.000 | 0.000 | 0.000 | 0.000 | 0.000 | 0.000 |
| 22.Oct.18 | 0 | 0.000 | 0.000 | 0.000 | 0.000 | 0.000 | 0.000 | 0.000 | 0.000 | 0.000 | 0.000 |
| 23.Oct.18 | 0 | 0.000 | 0.000 | 0.000 | 0.000 | 0.000 | 0.000 | 0.000 | 0.000 | 0.000 | 0.000 |
| 24.Oct.18 | 0 | 0.000 | 0.000 | 0.000 | 0.000 | 0.000 | 0.000 | 0.000 | 0.000 | 0.000 | 0.000 |
| 25.Oct.18 | 0 | 0.000 | 0.000 | 0.0001 | 0.000 | 0.000 | 0.000 | 0.000 | 0.000 | 0.000 | 0.000 |
| 26.Oct.18 | 0 | 0.000 | 0.000 | 0.000 | 0.000 | 0.000 | 0.000 | 0.000 | 0.000 | 0.000 | 0.000 |
| 27.Oct.18 | 0 | 0.000 | 0.000 | 0.000 | 0.000 | 0.000 | 0.000 | 0.000 | 0.000 | 0.000 | 0.000 |
| 28.Oct.18 | 0 | 0.000 | 0.000 | 0.000 | 0.000 | 0.000 | 0.000 | 0.000 | 0.000 | 0.000 | 0.000 |
| 29.Oct.18 | 0 | 0.000 | 0.000 | 0.000 | 0.000 | 0.000 | 0.000 | 0.000 | 0.005 | 0.000 | 0.000 |
| 30.Oct.18 | 0 | 0.000 | 0.000 | 0.000 | 0.000 | 0.000 | 0.000 | 0.000 | 0.000 | 0.000 | 0.000 |
| 31.Oct.18 | 0 | 0.000 | 0.000 | 0.000 | 0.000 | 0.000 | 0.000 | 0.000 | 0.000 | 0.000 | 0.000 |
| TOTAL | 0 | 0.000 | 0.000 | 0.000 | 0.000 | 0.000 | 0.000 | 0.000 | 0.340 | 0.000 | 0.000 |

ALL FIGURES IN MUs

| Date | Shedding due to Transmission/Grid Constraints in Central Sector Stations / TTC / ATC VIOLATION | | | | DUE TO NEW GRID CODE REGULATION DEVIATION | | | Shedding due to Transmission/Grid Constraints in Central sector stations | | | | Total 24=8 to 23 | Total shedding due to grid restrictions 25=7+24 |
|-----------|--|--------------|--------------|--------------|---|--------------|--------------|--|--------------|--------------|--------------|---------------------|--|
| | BSES | | NDPL | NDMC | BSES | | TPDDL | NDMC | BSES | | | | |
| | BYPL | BRPL | | | BYPL | BRPL | | | BYPL | BRPL | | | |
| | 13 | 14 | 15 | 16 | 17 | 18 | 19 | 20 | 21 | 22 | 23 | | |
| 01.Oct.18 | 0.000 | 0.000 | 0.000 | 0.000 | 0.000 | 0.000 | 0.000 | 0.000 | 0.000 | 0.000 | 0.000 | 0.000 | 0.000 |
| 02.Oct.18 | 0.000 | 0.000 | 0.000 | 0.000 | 0.000 | 0.000 | 0.000 | 0.000 | 0.000 | 0.000 | 0.000 | 0.000 | 0.000 |
| 03.Oct.18 | 0.000 | 0.000 | 0.000 | 0.000 | 0.000 | 0.000 | 0.000 | 0.000 | 0.000 | 0.000 | 0.000 | 0.162 | 0.162 |
| 04.Oct.18 | 0.000 | 0.000 | 0.000 | 0.000 | 0.000 | 0.000 | 0.000 | 0.000 | 0.000 | 0.000 | 0.000 | 0.150 | 0.150 |
| 05.Oct.18 | 0.000 | 0.000 | 0.000 | 0.000 | 0.000 | 0.000 | 0.000 | 0.000 | 0.000 | 0.000 | 0.000 | 0.023 | 0.023 |
| 06.Oct.18 | 0.000 | 0.000 | 0.000 | 0.000 | 0.000 | 0.000 | 0.000 | 0.000 | 0.000 | 0.000 | 0.000 | 0.000 | 0.000 |
| 07.Oct.18 | 0.000 | 0.000 | 0.000 | 0.000 | 0.000 | 0.000 | 0.000 | 0.000 | 0.000 | 0.000 | 0.000 | 0.000 | 0.000 |
| 08.Oct.18 | 0.000 | 0.000 | 0.000 | 0.000 | 0.000 | 0.000 | 0.000 | 0.000 | 0.000 | 0.000 | 0.000 | 0.000 | 0.000 |
| 09.Oct.18 | 0.000 | 0.000 | 0.000 | 0.000 | 0.000 | 0.000 | 0.000 | 0.000 | 0.000 | 0.000 | 0.000 | 0.000 | 0.000 |
| 10.Oct.18 | 0.000 | 0.000 | 0.000 | 0.000 | 0.000 | 0.000 | 0.000 | 0.000 | 0.000 | 0.000 | 0.000 | 0.000 | 0.000 |
| 11.Oct.18 | 0.000 | 0.000 | 0.000 | 0.000 | 0.000 | 0.000 | 0.000 | 0.000 | 0.000 | 0.000 | 0.000 | 0.000 | 0.000 |
| 12.Oct.18 | 0.000 | 0.000 | 0.000 | 0.000 | 0.000 | 0.000 | 0.000 | 0.000 | 0.000 | 0.000 | 0.000 | 0.000 | 0.000 |
| 13.Oct.18 | 0.000 | 0.000 | 0.000 | 0.000 | 0.000 | 0.000 | 0.000 | 0.000 | 0.000 | 0.000 | 0.000 | 0.000 | 0.000 |
| 14.Oct.18 | 0.000 | 0.000 | 0.000 | 0.000 | 0.000 | 0.000 | 0.000 | 0.000 | 0.000 | 0.000 | 0.000 | 0.000 | 0.000 |
| 15.Oct.18 | 0.000 | 0.000 | 0.000 | 0.000 | 0.000 | 0.000 | 0.000 | 0.000 | 0.000 | 0.000 | 0.000 | 0.000 | 0.000 |
| 16.Oct.18 | 0.000 | 0.000 | 0.000 | 0.000 | 0.000 | 0.000 | 0.000 | 0.000 | 0.000 | 0.000 | 0.000 | 0.000 | 0.000 |
| 17.Oct.18 | 0.000 | 0.000 | 0.000 | 0.000 | 0.000 | 0.000 | 0.000 | 0.000 | 0.000 | 0.000 | 0.000 | 0.000 | 0.000 |
| 18.Oct.18 | 0.000 | 0.000 | 0.000 | 0.000 | 0.000 | 0.000 | 0.000 | 0.000 | 0.000 | 0.000 | 0.000 | 0.000 | 0.000 |
| 19.Oct.18 | 0.000 | 0.000 | 0.000 | 0.000 | 0.000 | 0.000 | 0.000 | 0.000 | 0.000 | 0.000 | 0.000 | 0.000 | 0.000 |
| 20.Oct.18 | 0.000 | 0.000 | 0.000 | 0.000 | 0.000 | 0.000 | 0.000 | 0.000 | 0.000 | 0.000 | 0.000 | 0.000 | 0.000 |
| 21.Oct.18 | 0.000 | 0.000 | 0.000 | 0.000 | 0.000 | 0.000 | 0.000 | 0.000 | 0.000 | 0.000 | 0.000 | 0.000 | 0.000 |
| 22.Oct.18 | 0.000 | 0.000 | 0.000 | 0.000 | 0.000 | 0.000 | 0.000 | 0.000 | 0.000 | 0.000 | 0.000 | 0.000 | 0.000 |
| 23.Oct.18 | 0.000 | 0.000 | 0.000 | 0.000 | 0.000 | 0.000 | 0.000 | 0.000 | 0.000 | 0.000 | 0.000 | 0.000 | 0.000 |
| 24.Oct.18 | 0.000 | 0.000 | 0.000 | 0.000 | 0.000 | 0.000 | 0.000 | 0.000 | 0.000 | 0.000 | 0.000 | 0.000 | 0.000 |
| 25.Oct.18 | 0.000 | 0.000 | 0.000 | 0.000 | 0.000 | 0.000 | 0.000 | 0.000 | 0.000 | 0.000 | 0.000 | 0.000 | 0.000 |
| 26.Oct.18 | 0.000 | 0.000 | 0.000 | 0.000 | 0.000 | 0.000 | 0.000 | 0.000 | 0.000 | 0.000 | 0.000 | 0.000 | 0.000 |
| 27.Oct.18 | 0.000 | 0.000 | 0.000 | 0.000 | 0.000 | 0.000 | 0.000 | 0.000 | 0.000 | 0.000 | 0.000 | 0.000 | 0.000 |
| 28.Oct.18 | 0.000 | 0.000 | 0.000 | 0.000 | 0.000 | 0.000 | 0.000 | 0.000 | 0.000 | 0.000 | 0.000 | 0.000 | 0.000 |
| 29.Oct.18 | 0.000 | 0.000 | 0.000 | 0.000 | 0.000 | 0.000 | 0.000 | 0.000 | 0.000 | 0.000 | 0.000 | 0.005 | 0.005 |
| 30.Oct.18 | 0.000 | 0.000 | 0.000 | 0.000 | 0.000 | 0.000 | 0.000 | 0.000 | 0.000 | 0.000 | 0.000 | 0.000 | 0.000 |
| 31.Oct.18 | 0.000 | 0.000 | 0.000 | 0.000 | 0.000 | 0.000 | 0.000 | 0.000 | 0.000 | 0.000 | 0.000 | 0.000 | 0.000 |
| | 0.000 | 0.000 | 0.000 | 0.000 | 0.000 | 0.000 | 0.000 | 0.000 | 0.000 | 0.000 | 0.000 | 0.340 | 0.340 |

ALL FIGURES IN MUs

| Date | DUE TO T&D CONSTRAINTS IN DELHI SYSTEM | | | | | | | | |
|-----------|--|--------------|--------------|--------------|--------------|--------------|--------------|--------------|--------------|
| | DTL | | | | | DISCOMS | | | |
| | BSES | | NDPL | NDMC | MES | BSES | | NDPL | NDMC |
| | BYPL | BRPL | | | | BYPL | BRPL | | |
| 26 | 27 | 28 | 29 | 30 | 31 | 32 | 33 | 34 | |
| 01.Oct.18 | 0.000 | 0.000 | 0.000 | 0.000 | 0.000 | 0.000 | 0.029 | 0.000 | 0.000 |
| 02.Oct.18 | 0.000 | 0.000 | 0.000 | 0.000 | 0.000 | 0.015 | 0.000 | 0.004 | 0.000 |
| 03.Oct.18 | 0.000 | 0.000 | 0.000 | 0.000 | 0.000 | 0.001 | 0.001 | 0.000 | 0.000 |
| 04.Oct.18 | 0.000 | 0.000 | 0.000 | 0.000 | 0.000 | 0.000 | 0.049 | 0.000 | 0.000 |
| 05.Oct.18 | 0.000 | 0.000 | 0.000 | 0.000 | 0.000 | 0.000 | 0.000 | 0.011 | 0.000 |
| 06.Oct.18 | 0.000 | 0.000 | 0.000 | 0.000 | 0.000 | 0.000 | 0.000 | 0.013 | 0.000 |
| 07.Oct.18 | 0.006 | 0.000 | 0.000 | 0.000 | 0.000 | 0.004 | 0.021 | 0.001 | 0.000 |
| 08.Oct.18 | 0.000 | 0.000 | 0.000 | 0.000 | 0.000 | 0.006 | 0.002 | 0.000 | 0.000 |
| 09.Oct.18 | 0.000 | 0.000 | 0.013 | 0.000 | 0.000 | 0.000 | 0.000 | 0.013 | 0.000 |
| 10.Oct.18 | 0.000 | 0.000 | 0.000 | 0.000 | 0.000 | 0.000 | 0.008 | 0.000 | 0.000 |
| 11.Oct.18 | 0.003 | 0.000 | 0.003 | 0.000 | 0.000 | 0.005 | 0.037 | 0.001 | 0.000 |
| 12.Oct.18 | 0.000 | 0.000 | 0.020 | 0.000 | 0.000 | 0.000 | 0.069 | 0.000 | 0.000 |
| 13.Oct.18 | 0.001 | 0.000 | 0.008 | 0.000 | 0.000 | 0.000 | 0.030 | 0.016 | 0.000 |
| 14.Oct.18 | 0.001 | 0.001 | 0.000 | 0.000 | 0.000 | 0.000 | 0.002 | 0.000 | 0.000 |
| 15.Oct.18 | 0.000 | 0.002 | 0.000 | 0.000 | 0.000 | 0.000 | 0.010 | 0.000 | 0.000 |
| 16.Oct.18 | 0.000 | 0.000 | 0.010 | 0.000 | 0.000 | 0.004 | 0.016 | 0.000 | 0.000 |
| 17.Oct.18 | 0.000 | 0.000 | 0.000 | 0.000 | 0.000 | 0.000 | 0.007 | 0.001 | 0.000 |
| 18.Oct.18 | 0.000 | 0.000 | 0.000 | 0.000 | 0.000 | 0.000 | 0.001 | 0.000 | 0.000 |
| 19.Oct.18 | 0.000 | 0.000 | 0.000 | 0.000 | 0.000 | 0.000 | 0.003 | 0.000 | 0.000 |
| 20.Oct.18 | 0.000 | 0.000 | 0.000 | 0.000 | 0.000 | 0.000 | 0.000 | 0.000 | 0.000 |
| 21.Oct.18 | 0.001 | 0.000 | 0.001 | 0.000 | 0.000 | 0.017 | 0.010 | 0.000 | 0.000 |
| 22.Oct.18 | 0.000 | 0.000 | 0.000 | 0.000 | 0.000 | 0.000 | 0.011 | 0.000 | 0.000 |
| 23.Oct.18 | 0.000 | 0.000 | 0.000 | 0.000 | 0.000 | 0.000 | 0.005 | 0.000 | 0.000 |
| 24.Oct.18 | 0.000 | 0.000 | 0.000 | 0.000 | 0.000 | 0.000 | 0.017 | 0.000 | 0.000 |
| 25.Oct.18 | 0.000 | 0.000 | 0.000 | 0.000 | 0.000 | 0.003 | 0.014 | 0.000 | 0.000 |
| 26.Oct.18 | 0.000 | 0.000 | 0.000 | 0.000 | 0.000 | 0.006 | 0.018 | 0.000 | 0.000 |
| 27.Oct.18 | 0.000 | 0.005 | 0.000 | 0.000 | 0.000 | 0.000 | 0.016 | 0.000 | 0.000 |
| 28.Oct.18 | 0.001 | 0.000 | 0.000 | 0.000 | 0.000 | 0.000 | 0.060 | 0.000 | 0.000 |
| 29.Oct.18 | 0.000 | 0.000 | 0.000 | 0.000 | 0.000 | 0.000 | 0.001 | 0.000 | 0.000 |
| 30.Oct.18 | 0.000 | 0.000 | 0.000 | 0.000 | 0.000 | 0.000 | 0.008 | 0.000 | 0.000 |
| 31.Oct.18 | 0.000 | 0.007 | 0.000 | 0.000 | 0.000 | 0.000 | 0.003 | 0.000 | 0.000 |
| | 0.013 | 0.015 | 0.055 | 0.000 | 0.000 | 0.061 | 0.448 | 0.060 | 0.000 |

ALL FIGURES IN MU_s

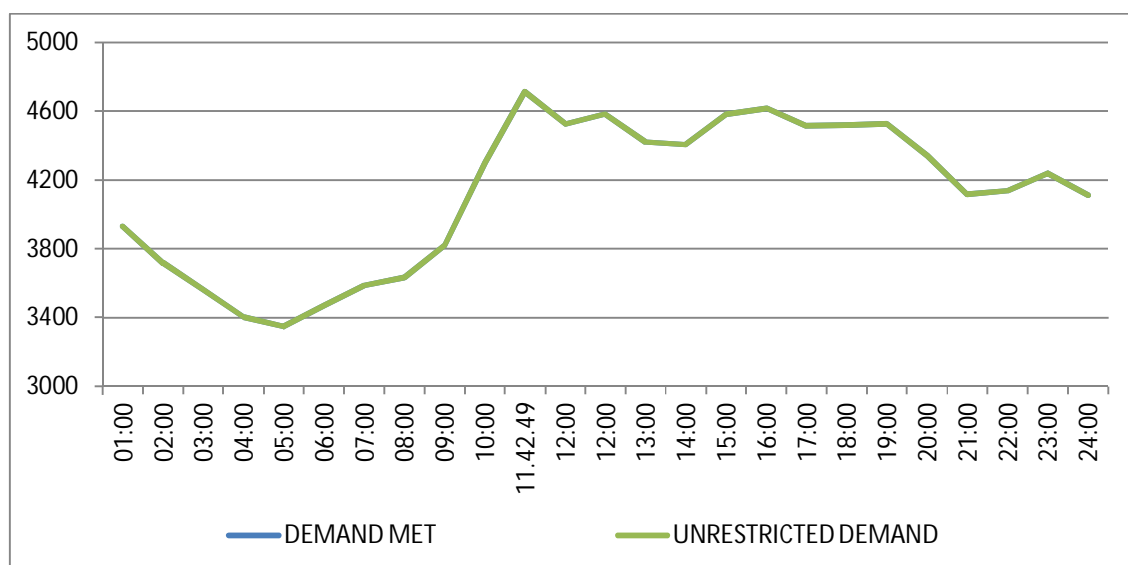
| DATE | OTHER AGENCIES LIKE GENCO, BBMB, BTPS ETC. | | | | THEFT PRONE SHEDDING | | | TOTAL SHEDDING DUE TO T&D CONSTS. & THEFT PRONE | GRAND TOTAL |
|--------------|---|--------------|--------------|--------------|----------------------|--------------|--------------|---|----------------|
| | BSES | | NDPL | NDMC | BSES | | NDPL | | |
| | BYPL | BRPL | | | BYPL | BRPL | | | |
| 1 | 35 | 36 | 37 | 38 | 39 | 40 | 41 | 42= 26 to 41 | 43 = 25 + 42 |
| 01.Oct.18 | 0.000 | 0.000 | 0.003 | 0.000 | 0.000 | 0.000 | 0.000 | 0.032 | 0.032 |
| 02.Oct.18 | 0.000 | 0.000 | 0.000 | 0.000 | 0.000 | 0.000 | 0.000 | 0.019 | 0.019 |
| 03.Oct.18 | 0.000 | 0.000 | 0.000 | 0.000 | 0.000 | 0.000 | 0.000 | 0.002 | 0.164 |
| 04.Oct.18 | 0.000 | 0.000 | 0.000 | 0.000 | 0.000 | 0.000 | 0.000 | 0.049 | 0.199 |
| 05.Oct.18 | 0.000 | 0.000 | 0.000 | 0.000 | 0.000 | 0.000 | 0.000 | 0.011 | 0.034 |
| 06.Oct.18 | 0.000 | 0.000 | 0.000 | 0.000 | 0.000 | 0.000 | 0.000 | 0.013 | 0.013 |
| 07.Oct.18 | 0.000 | 0.000 | 0.000 | 0.000 | 0.000 | 0.000 | 0.000 | 0.032 | 0.032 |
| 08.Oct.18 | 0.000 | 0.000 | 0.000 | 0.000 | 0.000 | 0.000 | 0.000 | 0.008 | 0.008 |
| 09.Oct.18 | 0.000 | 0.000 | 0.000 | 0.000 | 0.000 | 0.000 | 0.000 | 0.026 | 0.026 |
| 10.Oct.18 | 0.000 | 0.000 | 0.000 | 0.000 | 0.000 | 0.000 | 0.000 | 0.008 | 0.008 |
| 11.Oct.18 | 0.000 | 0.000 | 0.000 | 0.000 | 0.000 | 0.000 | 0.000 | 0.049 | 0.049 |
| 12.Oct.18 | 0.000 | 0.000 | 0.000 | 0.000 | 0.000 | 0.000 | 0.000 | 0.089 | 0.089 |
| 13.Oct.18 | 0.000 | 0.000 | 0.000 | 0.000 | 0.000 | 0.000 | 0.000 | 0.055 | 0.055 |
| 14.Oct.18 | 0.000 | 0.000 | 0.000 | 0.000 | 0.000 | 0.000 | 0.000 | 0.004 | 0.004 |
| 15.Oct.18 | 0.000 | 0.000 | 0.000 | 0.000 | 0.000 | 0.000 | 0.000 | 0.012 | 0.012 |
| 16.Oct.18 | 0.000 | 0.000 | 0.000 | 0.000 | 0.000 | 0.000 | 0.000 | 0.030 | 0.030 |
| 17.Oct.18 | 0.000 | 0.000 | 0.000 | 0.000 | 0.000 | 0.000 | 0.000 | 0.008 | 0.008 |
| 18.Oct.18 | 0.000 | 0.000 | 0.000 | 0.000 | 0.000 | 0.000 | 0.000 | 0.001 | 0.001 |
| 19.Oct.18 | 0.000 | 0.000 | 0.000 | 0.000 | 0.000 | 0.000 | 0.000 | 0.003 | 0.003 |
| 20.Oct.18 | 0.000 | 0.000 | 0.000 | 0.000 | 0.000 | 0.000 | 0.000 | 0.000 | 0.000 |
| 21.Oct.18 | 0.000 | 0.000 | 0.000 | 0.000 | 0.000 | 0.000 | 0.000 | 0.029 | 0.029 |
| 22.Oct.18 | 0.000 | 0.000 | 0.000 | 0.000 | 0.000 | 0.000 | 0.000 | 0.011 | 0.011 |
| 23.Oct.18 | 0.000 | 0.000 | 0.000 | 0.000 | 0.000 | 0.000 | 0.000 | 0.005 | 0.005 |
| 24.Oct.18 | 0.000 | 0.000 | 0.000 | 0.000 | 0.000 | 0.000 | 0.000 | 0.017 | 0.017 |
| 25.Oct.18 | 0.000 | 0.000 | 0.000 | 0.000 | 0.000 | 0.000 | 0.000 | 0.017 | 0.017 |
| 26.Oct.18 | 0.000 | 0.000 | 0.000 | 0.000 | 0.000 | 0.000 | 0.000 | 0.024 | 0.024 |
| 27.Oct.18 | 0.000 | 0.000 | 0.000 | 0.000 | 0.000 | 0.000 | 0.000 | 0.021 | 0.021 |
| 28.Oct.18 | 0.000 | 0.000 | 0.000 | 0.000 | 0.000 | 0.000 | 0.000 | 0.061 | 0.061 |
| 29.Oct.18 | 0.000 | 0.000 | 0.000 | 0.000 | 0.000 | 0.000 | 0.000 | 0.001 | 0.006 |
| 30.Oct.18 | 0.000 | 0.000 | 0.000 | 0.000 | 0.000 | 0.000 | 0.000 | 0.008 | 0.008 |
| 31.Oct.18 | 0.000 | 0.000 | 0.000 | 0.000 | 0.000 | 0.000 | 0.000 | 0.010 | 0.010 |
| TOTAL | 0.000 | 0.000 | 0.003 | 0.000 | 0.000 | 0.000 | 0.000 | 0.655 | 0.995 |

| DATE | (NET CONS.) | MAXI. DEMAND MET DURING THE DAY | TIME OF OCCURRENCE OF MAX DEMAND | SHEDDING AT THIS TIME | UN-RESTRICTED DEMAND | MAXIMUM UN-RESTRICTED DEMAND DURING THE DAY | TIME OF MAX. UN-REST. DEMAND | DEMAND AT THAT TIME | SHEDDING AT THAT TIME |
|--------------|-----------------|---------------------------------|----------------------------------|-----------------------|----------------------|---|------------------------------|---------------------|-----------------------|
| | In Mus. | IN MW | IN HRS. | IN MW | IN MW | IN MW | HRS. | IN MW | IN MW |
| 1 | 32 | 33 | 34 | 35 | 36=33+35 | 37=39+40 | 38 | 39 | 40 |
| 01.Oct.18 | 95.112 | 4568 | 15:31:29 | 0 | 4568 | 4568 | 15:31:29 | 4568 | 0 |
| 02.Oct.18 | 84.800 | 4167 | 00:00:05 | 0 | 4167 | 4167 | 00:00:05 | 4167 | 0 |
| 03.Oct.18 | 95.566 | 4630 | 15:40:53 | 0 | 4630 | 4630 | 15:40:53 | 4630 | 0 |
| 04.Oct.18 | 99.609 | 4704 | 15:35:50 | 70 | 4774 | 4774 | 15:35:50 | 4704 | 70 |
| 05.Oct.18 | 99.255 | 4713 | 11:42:49 | 0 | 4713 | 4713 | 11:42:49 | 4713 | 0 |
| 06.Oct.18 | 92.713 | 4291 | 18:45:22 | 3 | 4294 | 4294 | 18:45:22 | 4291 | 3 |
| 07.Oct.18 | 85.157 | 3975 | 19:01 | 0 | 3975 | 4004 | 22:30 | 3903 | 101 |
| 08.Oct.18 | 93.628 | 4374 | 18:26:36 | 0 | 4374 | 4374 | 18:26:36 | 4374 | 0 |
| 09.Oct.18 | 92.101 | 4482 | 18:34:05 | 0 | 4482 | 4482 | 18:34:05 | 4482 | 0 |
| 10.Oct.18 | 95.474 | 4600 | 15:01:39 | 0 | 4600 | 4600 | 15:01:39 | 4600 | 0 |
| 11.Oct.18 | 91.804 | 4482 | 11:41:05 | 10 | 4492 | 4492 | 11:41:05 | 4482 | 10 |
| 12.Oct.18 | 83.632 | 4173 | 18:21:23 | 0 | 4173 | 4173 | 18:21:23 | 4173 | 0 |
| 13.Oct.18 | 76.004 | 3825 | 18:32:20 | 0 | 3825 | 3825 | 18:32:20 | 3825 | 0 |
| 14.Oct.18 | 70.515 | 3522 | 18:28:10 | 0 | 3522 | 3522 | 18:28:10 | 3522 | 0 |
| 15.Oct.18 | 76.748 | 3963 | 18:32:34 | 0 | 3963 | 3963 | 18:32:34 | 3963 | 0 |
| 16.Oct.18 | 80.519 | 4083 | 18:15:48 | 0 | 4083 | 4083 | 18:15:48 | 4083 | 0 |
| 17.Oct.18 | 80.279 | 4042 | 18:28:57 | 0 | 4042 | 4042 | 18:28:57 | 4042 | 0 |
| 18.Oct.18 | 81.005 | 4089 | 18:19:29 | 0 | 4089 | 4089 | 18:19:29 | 4089 | 0 |
| 19.Oct.18 | 70.467 | 3380 | 11:17:41 | 0 | 3380 | 3380 | 11:17:41 | 3380 | 0 |
| 20.Oct.18 | 72.578 | 3756 | 18:21:58 | 0 | 3756 | 3756 | 18:21:58 | 3756 | 0 |
| 21.Oct.18 | 69.679 | 3487 | 18:36:22 | 0 | 3487 | 3487 | 18:36:22 | 3487 | 0 |
| 22.Oct.18 | 72.981 | 3784 | 18:34:29 | 0 | 3784 | 3784 | 18:34:29 | 3784 | 0 |
| 23.Oct.18 | 73.217 | 3795 | 18:16:55 | 0 | 3795 | 3795 | 18:16:55 | 3795 | 0 |
| 24.Oct.18 | 74.042 | 3835 | 18:21:51 | 0 | 3835 | 3835 | 18:21:51 | 3835 | 0 |
| 25.Oct.18 | 73.442 | 3869 | 18:20:44 | 0 | 3869 | 3869 | 18:20:44 | 3869 | 0 |
| 26.Oct.18 | 72.637 | 3768 | 18:16:39 | 0 | 3768 | 3768 | 18:16:39 | 3768 | 0 |
| 27.Oct.18 | 68.812 | 3503 | 18:08:41 | 0 | 3503 | 3503 | 18:08:41 | 3503 | 0 |
| 28.Oct.18 | 65.636 | 3363 | 18:32:21 | 0 | 3363 | 3363 | 18:32:21 | 3363 | 0 |
| 29.Oct.18 | 69.901 | 3696 | 18:24:55 | 0 | 3696 | 3696 | 18:24:55 | 3696 | 0 |
| 30.Oct.18 | 72.513 | 3738 | 10:34:33 | 0 | 3738 | 3738 | 10:34:33 | 3738 | 0 |
| 31.Oct.18 | 70.567 | 3736 | 18:17:38 | 0 | 3736 | 3736 | 18:17:38 | 3736 | 0 |
| TOTAL | 2500.393 | 4713 | 11:42:49 | 0 | 4713 | 4774 | 15:35:50 | 4704 | 70 |
| | | 05.10.18 | | | 04.10.18 | | | | |

10 **LOAD PATTERN OF DELHI ON THE DAY OF PEAK DEMAND MET DURING OCT 2018 ON 05.10.2018- 4713MW AT 11.42.49HRS.**

All figures in MW

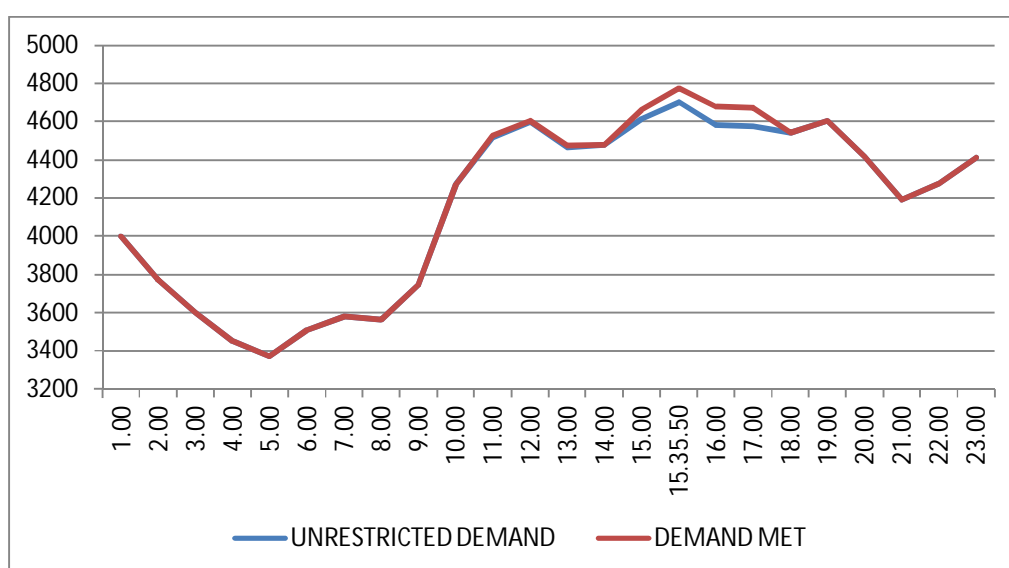
| Hrs. | Demand | Load Shedding | Un-Restricted Demand |
|-----------------------|---------------|---------------|----------------------|
| 01:00 | 3928 | 0 | 3928 |
| 02:00 | 3715 | 0 | 3715 |
| 03:00 | 3561 | 0 | 3561 |
| 04:00 | 3400 | 0 | 3400 |
| 05:00 | 3347 | 0 | 3347 |
| 06:00 | 3472 | 0 | 3472 |
| 07:00 | 3588 | 0 | 3588 |
| 08:00 | 3633 | 0 | 3633 |
| 09:00 | 3818 | 0 | 3818 |
| 10:00 | 4300 | 0 | 4300 |
| 11.42.49 | 4713 | 0 | 4713 |
| 12:00 | 4525 | 0 | 4525 |
| 12:00 | 4583 | 0 | 4583 |
| 13:00 | 4419 | 0 | 4419 |
| 14:00 | 4404 | 0 | 4404 |
| 15:00 | 4583 | 0 | 4583 |
| 16:00 | 4616 | 0 | 4616 |
| 17:00 | 4513 | 0 | 4513 |
| 18:00 | 4516 | 0 | 4516 |
| 19:00 | 4526 | 0 | 4526 |
| 20:00 | 4341 | 0 | 4341 |
| 21:00 | 4116 | 0 | 4116 |
| 22:00 | 4138 | 0 | 4138 |
| 23:00 | 4240 | 0 | 4240 |
| 24:00 | 4112 | 0 | 4112 |
| Total (IN MUS) | 92.713 | 0.013 | 92.726 |



11 LOAD PATTERN OF DELHI ON THE DAY OF MAXIMUM UN-RESTRICTED DEMAND DURING OCT 2018 ON 04.10.2018-4774MW AT 15.035.50HRS.

All figures in MW

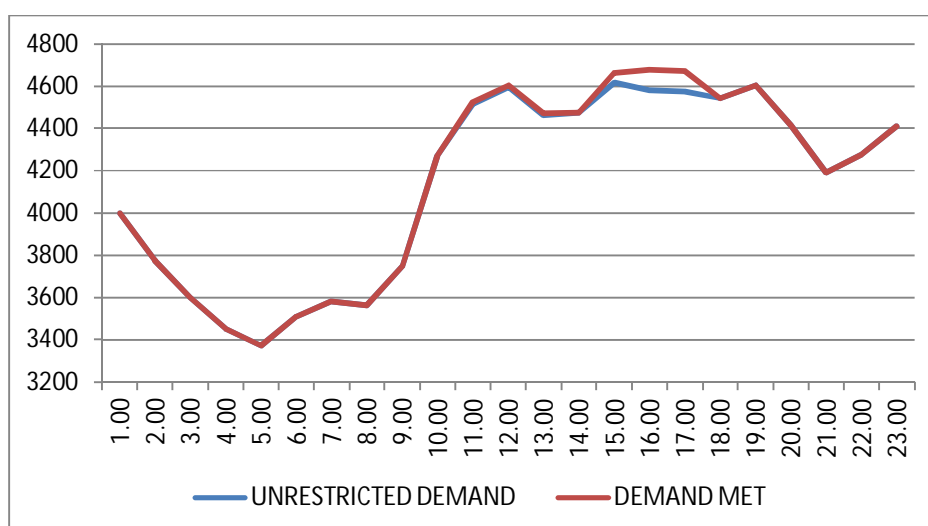
| Hrs. | Demand | Load Shedding | Un-Restricted Demand |
|-----------------------|---------------|---------------|----------------------|
| 1.00 | 3999 | 0 | 3999 |
| 2.00 | 3773 | 0 | 3773 |
| 3.00 | 3601 | 0 | 3601 |
| 4.00 | 3452 | 0 | 3452 |
| 5.00 | 3371 | 0 | 3371 |
| 6.00 | 3509 | 0 | 3509 |
| 7.00 | 3580 | 0 | 3580 |
| 8.00 | 3564 | 0 | 3564 |
| 9.00 | 3748 | 0 | 3748 |
| 10.00 | 4271 | 0 | 4271 |
| 11.00 | 4517 | 9 | 4526 |
| 12.00 | 4597 | 9 | 4606 |
| 13.00 | 4464 | 9 | 4473 |
| 14.00 | 4476 | 0 | 4476 |
| 15.00 | 4615 | 50 | 4665 |
| 15.35.50 | 4704 | 70 | 4774 |
| 16.00 | 4582 | 97 | 4679 |
| 17.00 | 4576 | 96 | 4672 |
| 18.00 | 4544 | 0 | 4544 |
| 19.00 | 4606 | 0 | 4606 |
| 20.00 | 4415 | 0 | 4415 |
| 21.00 | 4192 | 0 | 4192 |
| 22.00 | 4276 | 0 | 4276 |
| 23.00 | 4411 | 0 | 4411 |
| 24.00 | 4211 | 0 | 4211 |
| Total (IN MUS) | 99.609 | 0.199 | 99.808 |



**12 LOAD PATTERN OF DELHI ON THE DAY OF MAXIMUM ENERGY CONSUMED
DURING OCT 2018 – 04.10.2018 – 99.609Mus**

All figures in MW

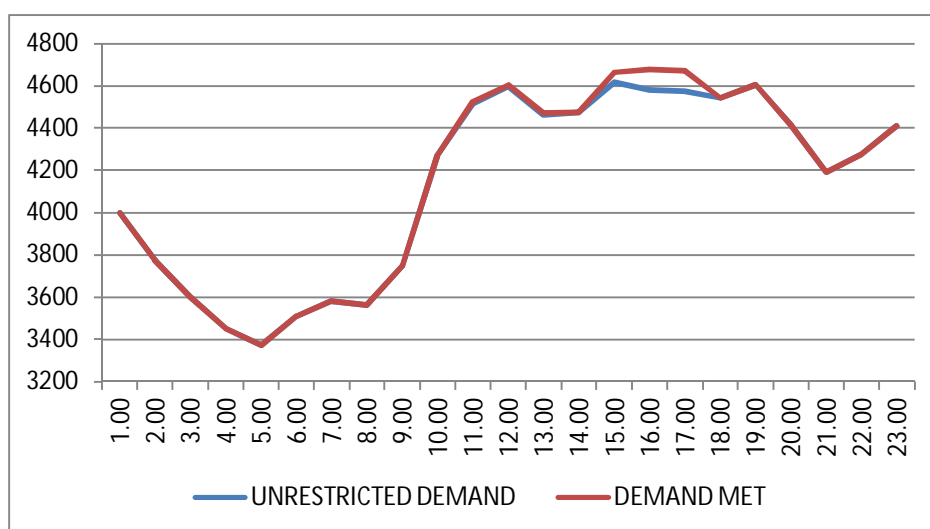
| Hrs. | Demand | Load Shedding | Un-Restricted Demand |
|-----------------------|---------------|---------------|----------------------|
| 1.00 | 3999 | 0 | 3999 |
| 2.00 | 3773 | 0 | 3773 |
| 3.00 | 3601 | 0 | 3601 |
| 4.00 | 3452 | 0 | 3452 |
| 5.00 | 3371 | 0 | 3371 |
| 6.00 | 3509 | 0 | 3509 |
| 7.00 | 3580 | 0 | 3580 |
| 8.00 | 3564 | 0 | 3564 |
| 9.00 | 3748 | 0 | 3748 |
| 10.00 | 4271 | 0 | 4271 |
| 11.00 | 4517 | 9 | 4526 |
| 12.00 | 4597 | 9 | 4606 |
| 13.00 | 4464 | 9 | 4473 |
| 14.00 | 4476 | 0 | 4476 |
| 15.00 | 4615 | 50 | 4665 |
| 16.00 | 4582 | 97 | 4679 |
| 17.00 | 4576 | 96 | 4672 |
| 18.00 | 4544 | 0 | 4544 |
| 19.00 | 4606 | 0 | 4606 |
| 20.00 | 4415 | 0 | 4415 |
| 21.00 | 4192 | 0 | 4192 |
| 22.00 | 4276 | 0 | 4276 |
| 23.00 | 4411 | 0 | 4411 |
| 24.00 | 4211 | 0 | 4211 |
| Total (IN MUS) | 99.609 | 0.199 | 99.808 |



13 LOAD PATTERN OF DELHI ON THE DAY OF MAXIMUM UNRESTRICTED ENERGY DEMAND DURING OCT 2018 – 04.09.2018 – 99.808 Mus

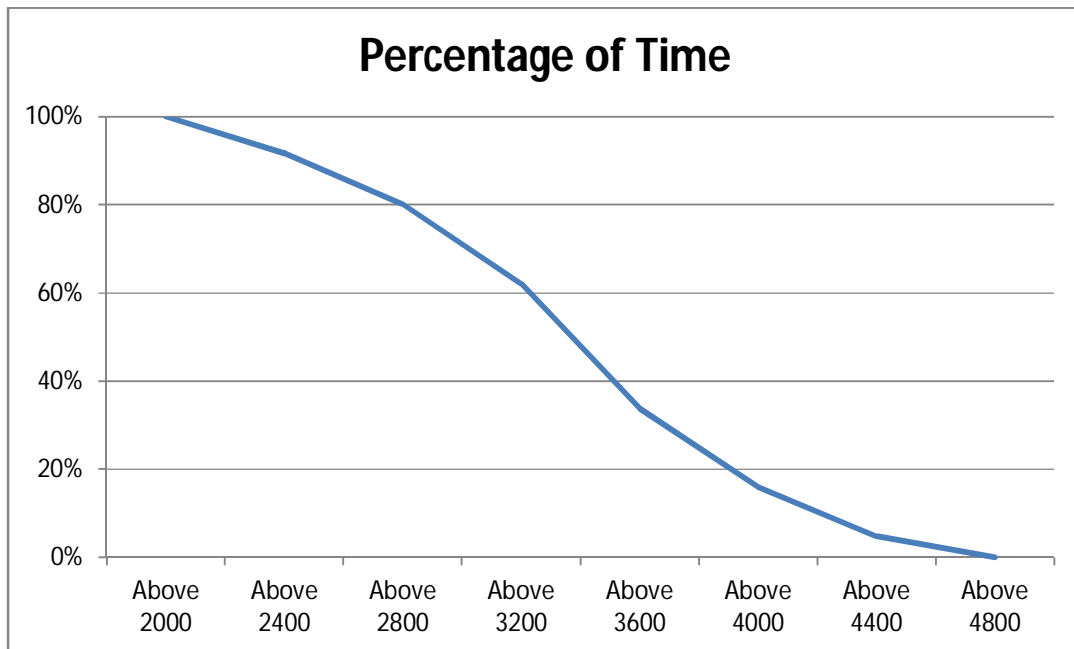
All figures in MW

| Hrs. | Demand | Load Shedding | Un-Restricted Demand |
|-----------------------|---------------|---------------|----------------------|
| 1.00 | 3999 | 0 | 3999 |
| 2.00 | 3773 | 0 | 3773 |
| 3.00 | 3601 | 0 | 3601 |
| 4.00 | 3452 | 0 | 3452 |
| 5.00 | 3371 | 0 | 3371 |
| 6.00 | 3509 | 0 | 3509 |
| 7.00 | 3580 | 0 | 3580 |
| 8.00 | 3564 | 0 | 3564 |
| 9.00 | 3748 | 0 | 3748 |
| 10.00 | 4271 | 0 | 4271 |
| 11.00 | 4517 | 9 | 4526 |
| 12.00 | 4597 | 9 | 4606 |
| 13.00 | 4464 | 9 | 4473 |
| 14.00 | 4476 | 0 | 4476 |
| 15.00 | 4615 | 50 | 4665 |
| 16.00 | 4582 | 97 | 4679 |
| 17.00 | 4576 | 96 | 4672 |
| 18.00 | 4544 | 0 | 4544 |
| 19.00 | 4606 | 0 | 4606 |
| 20.00 | 4415 | 0 | 4415 |
| 21.00 | 4192 | 0 | 4192 |
| 22.00 | 4276 | 0 | 4276 |
| 23.00 | 4411 | 0 | 4411 |
| 24.00 | 4211 | 0 | 4211 |
| Total (IN MUS) | 99.609 | 0.199 | 99.808 |



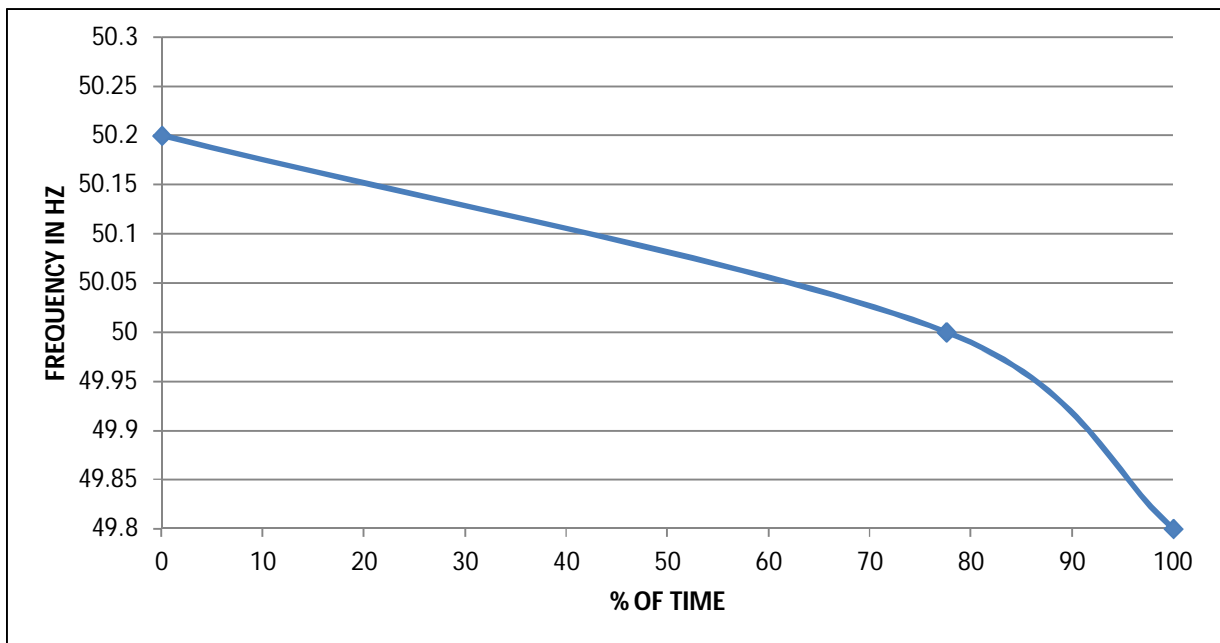
4 LOAD DURATION CURVE FOR OCT 2018

| Load in MW | Percentage of Time |
|------------|--------------------|
| Above 2000 | 100% |
| Above 2400 | 91.70% |
| Above 2800 | 80.00% |
| Above 3200 | 62.03% |
| Above 3600 | 33.74% |
| Above 4000 | 15.96% |
| Above 4400 | 4.84% |
| Above 4800 | 0.00% |



FREQUENCY ANALYSIS FOR THE MONTH OF OCT 2018

| Frequency Range in Hz. | Percentage of time |
|-------------------------------|---------------------------|
| Above 49.8 | 100.00 |
| Above 50.00 | 77.55 |
| Above 50.20 | 0.00 |



16 VOLTAGE PROFILE OF 220 KV SUB-STATIONS IN DELHI DURING OCT 2018

All figures in kV

| Date | NARELA | | GAZIPUR | |
|-----------|--------|--------|---------|--------|
| | Max | Min | Max | Min |
| 01.Oct.18 | 233.43 | 223.37 | 234.72 | 222.98 |
| 02.Oct.18 | 233.43 | 226.34 | 233.82 | 226.59 |
| 03.Oct.18 | 234.07 | 222.85 | 234.59 | 221.44 |
| 04.Oct.18 | 232.01 | 224.14 | 233.04 | 222.21 |
| 05.Oct.18 | 234.07 | 224.01 | 233.95 | 222.34 |
| 06.Oct.18 | 233.95 | 224.79 | 233.3 | 222.85 |
| 07.Oct.18 | 234.72 | 228.01 | 234.98 | 226.98 |
| 08.Oct.18 | 234.59 | 224.66 | 235.62 | 222.21 |
| 09.Oct.18 | 234.07 | 222.47 | 234.33 | 221.69 |
| 10.Oct.18 | 233.04 | 223.63 | 232.66 | 222.34 |
| 11.Oct.18 | 234.72 | 223.76 | 234.46 | 224.01 |
| 12.Oct.18 | 237.69 | 226.21 | 237.94 | 224.14 |
| 13.Oct.18 | 237.04 | 225.69 | 236.91 | 224.66 |
| 14.Oct.18 | 235.11 | 226.85 | 236.65 | 228.53 |
| 15.Oct.18 | 235.11 | 225.43 | 237.81 | 225.69 |
| 16.Oct.18 | 234.72 | 225.56 | 237.69 | 225.95 |
| 17.Oct.18 | 234.59 | 225.3 | 237.56 | 225.05 |
| 18.Oct.18 | 234.59 | 224.14 | 237.17 | 225.56 |
| 19.Oct.18 | 234.59 | 229.3 | 238.2 | 231.75 |
| 20.Oct.18 | 236.65 | 226.85 | 239.88 | 228.27 |
| 21.Oct.18 | 236.01 | 228.01 | 238.97 | 230.46 |
| 22.Oct.18 | 235.75 | 226.98 | 238.59 | 228.27 |
| 23.Oct.18 | 235.88 | 225.05 | 239.23 | 227.37 |
| 24.Oct.18 | 235.36 | 224.92 | 239.1 | 224.92 |
| 25.Oct.18 | 235.36 | 226.59 | 238.97 | 227.63 |
| 26.Oct.18 | 235.11 | 225.05 | 238.85 | 226.98 |
| 27.Oct.18 | 236.27 | 226.72 | 237.04 | 227.88 |
| 28.Oct.18 | 238.59 | 228.14 | 239.88 | 230.21 |
| 29.Oct.18 | 236.91 | 225.3 | 238.46 | 226.34 |
| 30.Oct.18 | 238.59 | 227.24 | 239.49 | 227.5 |
| 31.Oct.18 | 238.59 | 222.98 | 239.75 | 228.92 |

17 VOLTAGE PROFILE OF 400 KV SUB-STATIONS IN DELHI DURING OCT 2018

All figures in kV

| Date | 400kV Bamnauli Grid Sub-Station | | | | |
|-----------|---------------------------------|----------|--------|----------|------------|
| | Max KV | Max Time | Min KV | Min Time | Average KV |
| 01.Oct.18 | 413.87 | 3:59:48 | 395.11 | 18:32:00 | 405.33 |
| 02.Oct.18 | 413.17 | 8:02:12 | 400.74 | 18:46:15 | 407.89 |
| 03.Oct.18 | 413.87 | 3:59:35 | 393.94 | 18:36:08 | 402.99 |
| 04.Oct.18 | 411.99 | 4:00:25 | 396.99 | 9:49:00 | 403.88 |
| 05.Oct.18 | 413.87 | 4:01:54 | 394.88 | 10:43:04 | 404.08 |
| 06.Oct.18 | 413.87 | 3:04:56 | 396.75 | 18:34:58 | 405.39 |
| 07.Oct.18 | 416.21 | 6:03:30 | 405.19 | 10:26:11 | 410.08 |
| 08.Oct.18 | 416.92 | 3:59:53 | 396.75 | 10:21:34 | 406.52 |
| 09.Oct.18 | 413.63 | 4:00:07 | 396.75 | 18:28:09 | 403.92 |
| 10.Oct.18 | 412.46 | 3:00:40 | 397.92 | 15:50:52 | 405.65 |
| 11.Oct.18 | 415.04 | 2:55:54 | 397.45 | 10:47:45 | 407.38 |
| 12.Oct.18 | 418.32 | 4:00:40 | 397.45 | 18:40:09 | 406.49 |
| 13.Oct.18 | 415.04 | 3:58:41 | 397.45 | 10:41:22 | 406.13 |
| 14.Oct.18 | 413.63 | 4:00:44 | 399.33 | 18:39:16 | 407.42 |
| 15.Oct.18 | 413.87 | 4:01:29 | 396.75 | 9:39:18 | 405.14 |
| 16.Oct.18 | 415.04 | 4:00:26 | 398.39 | 9:45:12 | 406.11 |
| 17.Oct.18 | 414.34 | 3:59:55 | 398.39 | 9:27:25 | 405.18 |
| 18.Oct.18 | 413.63 | 4:00:27 | 397.92 | 18:11:10 | 405.94 |
| 19.Oct.18 | 414.57 | 3:36:21 | 404.25 | 9:50:02 | 409.9 |
| 20.Oct.18 | 417.15 | 3:59:35 | 400.5 | 8:48:39 | 407.9 |
| 21.Oct.18 | 416.92 | 21:31:41 | 403.32 | 10:45:09 | 410.03 |
| 22.Oct.18 | 415.74 | 4:01:12 | 400.97 | 9:43:43 | 407.43 |
| 23.Oct.18 | 416.68 | 3:59:45 | 398.63 | 10:17:16 | 408.06 |
| 24.Oct.18 | 416.21 | 4:00:01 | 394.64 | 9:38:20 | 407 |
| 25.Oct.18 | 415.74 | 3:59:32 | 398.63 | 9:11:44 | 407.25 |
| 26.Oct.18 | 414.81 | 3:58:46 | 397.45 | 9:38:00 | 406.92 |
| 27.Oct.18 | 415.74 | 20:59:22 | 398.63 | 9:29:10 | 407.79 |
| 28.Oct.18 | 418.32 | 20:55:55 | 402.61 | 11:38:04 | 409.69 |
| 29.Oct.18 | 415.51 | 4:00:19 | 396.75 | 9:22:28 | 407.98 |
| 30.Oct.18 | 418.32 | 4:01:30 | 398.63 | 9:36:11 | 409.55 |
| 31.Oct.18 | 418.32 | 3:59:43 | 401.44 | 10:33:54 | 410.29 |

All figures in kV

| Date | 400kV Bawana Grid Sub-Station | | | | |
|-----------|-------------------------------|----------|--------|----------|------------|
| | Max KV | Max Time | Min KV | Min Time | Average KV |
| 01.Oct.18 | 418.32 | 3:59:59 | 402.61 | 18:32:00 | 411.46 |
| 02.Oct.18 | 418.09 | 8:02:01 | 406.6 | 18:54:10 | 413.59 |
| 03.Oct.18 | 419.03 | 4:00:07 | 401.44 | 18:35:29 | 409.6 |
| 04.Oct.18 | 415.74 | 4:00:06 | 402.85 | 18:43:58 | 409.74 |
| 05.Oct.18 | 419.03 | 5:20:57 | 403.08 | 11:46:21 | 410.61 |
| 06.Oct.18 | 419.5 | 6:01:06 | 405.19 | 18:33:46 | 412.04 |
| 07.Oct.18 | 420.9 | 6:01:45 | 410.82 | 18:41:05 | 415.79 |
| 08.Oct.18 | 421.61 | 4:01:13 | 405.66 | 10:56:58 | 413.12 |
| 09.Oct.18 | 419.73 | 4:00:43 | 404.49 | 18:28:13 | 411.46 |
| 10.Oct.18 | 418.32 | 6:02:02 | 405.19 | 18:40:24 | 411.98 |
| 11.Oct.18 | 420.67 | 2:54:45 | 405.66 | 18:40:25 | 414.61 |
| 12.Oct.18 | 424.42 | 3:01:35 | 406.37 | 18:33:36 | 414.88 |
| 13.Oct.18 | 423.95 | 3:58:23 | 407.54 | 18:32:24 | 415.5 |
| 14.Oct.18 | 421.84 | 21:30:47 | 409.18 | 18:39:14 | 416.27 |
| 15.Oct.18 | 421.84 | 4:00:31 | 406.6 | 11:21:47 | 413.96 |
| 16.Oct.18 | 421.37 | 4:00:27 | 407.3 | 13:21:07 | 414.18 |
| 17.Oct.18 | 420.9 | 4:01:29 | 407.77 | 9:27:43 | 413.28 |
| 18.Oct.18 | 420.43 | 4:01:08 | 405.66 | 18:22:29 | 413.47 |
| 19.Oct.18 | 420.9 | 3:41:02 | 412.23 | 9:50:02 | 416.96 |
| 20.Oct.18 | 424.19 | 4:00:36 | 409.18 | 16:39:26 | 415.72 |
| 21.Oct.18 | 423.25 | 21:31:39 | 411.29 | 11:39:11 | 416.91 |
| 22.Oct.18 | 422.08 | 3:59:24 | 409.88 | 15:25:53 | 415.26 |
| 23.Oct.18 | 422.55 | 4:00:03 | 408.01 | 10:16:58 | 416.03 |
| 24.Oct.18 | 422.55 | 4:01:05 | 404.25 | 9:42:59 | 415.43 |
| 25.Oct.18 | 422.78 | 13:04:01 | 409.65 | 9:09:28 | 415.84 |
| 26.Oct.18 | 421.61 | 4:01:03 | 408.94 | 9:36:57 | 415.54 |
| 27.Oct.18 | 424.19 | 20:58:15 | 409.18 | 9:28:56 | 416.46 |
| 28.Oct.18 | 425.59 | 20:57:03 | 412.23 | 18:11:01 | 417.56 |
| 29.Oct.18 | 422.55 | 21:00:43 | 407.3 | 9:22:33 | 416.26 |
| 30.Oct.18 | 424.89 | 4:01:47 | 410.12 | 9:36:32 | 417.79 |
| 31.Oct.18 | 424.89 | 3:59:26 | 411.06 | 10:30:25 | 418.09 |

18 DETAILS OF BREAK-DOWNS DURING THE MONTH OF OCTOBER 2018

| SL NO | OCCURRENCE OF BREAK-DOWN | | DETAILS OF THE BREAKDOWN | TIME OF RESTORATION | | REMARKS |
|-------|--------------------------|-------|--|---------------------|-------|---|
| | DATE | TIME | | DATE | TIME | |
| 1 | 4.10.18 | 16:45 | SARITA VIHAR 220/66kV 100MVA Tx-I | 4.10.18 | 19:25 | I/C TRIPPED ON E/F. |
| 2 | 5.10.18 | 16:10 | 220KVBAWANA- ROHINI-2 CKT-I | 5.10.18 | 16:44 | AT ROHINI -II : POLE DISCRIPENCY, TC FAULTY. |
| 3 | 7.10.18 | 22:30 | 220kV GAZIPUR- PATPARGANJ CKT | 7.10.18 | 23:07 | AT GAZIPUR : O/C, YB PHASE, GEN TRIP. AT PATPARGANJ : CKT. DID NOT TRIPPED. |
| 4 | 8.10.18 | 19:43 | 220kV BAWANA-DSIIDC BAWANA CKT-II | 8.10.18 | 23:27 | At Bawana : Ckt. did not trip. At DSIDC Bawana : 86 RYB, Dist prot, Dist 24.7km, Y phase, differential trip, SOTF. |
| 5 | 8.10.18 | 19:43 | BAWANA 400/220kV 315MVA ICT-I | 8.10.18 | 23:25 | ICT tripped on Group A, Group B, 86A & 86B, Auxiliary Buchholz Relay, 30K. 220kV I/C -I tripped without indication. |
| 6 | 8.10.18 | 19:43 | BAWANA 400/220kV 315MVA ICT-II | 8.10.18 | 22:28 | ICT tripped on 86B, Buchholz trip. 220kV I/C -I tripped without indication. |
| 7 | 9.10.18 | 12:00 | ROHINI 220/66kV 100MVA Tx-III | 9.10.18 | 12:31 | 86, E/F. |
| 8 | 9.10.18 | 12:00 | ROHINI 220/66kV 100MVA Tx-IV | 9.10.18 | 12:31 | 86, E/F. |
| 9 | 9.10.18 | 12:00 | 220KVBAWANA- ROHINI CKT-II | 9.10.18 | 12:31 | AT ROHINI -I : AUTO RECLOSE. AT BAWANA : E/F. |
| 10 | 10.10.18 | 12:21 | BAWANA 400/220kV 315MVA ICT-VI | 10.10.18 | 15:23 | 86A&B, OSR, B PHASE. |
| 11 | 11.10.18 | 11:25 | ROHINI 66/11kV, 20MVA Tx-II | 11.10.18 | 15:40 | E/F. |
| 12 | 11.10.18 | 16:17 | INDRAPRASTHA POWER 220/33kV 100MVA Tx-II | 11.10.18 | 16:27 | WITHOUT INDICATION. |
| 13 | 11.10.18 | 16:17 | INDRAPRASTHA POWER 220/33kV 100MVA Tx-I | 11.10.18 | 16:27 | E/F, 86. |
| 14 | 12.10.18 | 06:45 | MEHRAULI 220/66kV 100MVA Tx-III | 12.10.18 | 11:25 | CHANGING LINE ISOLATOR GEAR BOX. |
| 15 | 12.10.18 | 17:20 | 220kV PAPPANKALAN-I-NARAINA CKT-I | 12.10.18 | 19:22 | AT PAPPANKALAN-I : DIST PROT, ZONE-I, Y PHSE. AT NARAINA : 86ABC. |
| 16 | 14.10.18 | 14:27 | 220kV KANJHAWALA-NAJAFGARH CKT | 14.10.18 | 15:20 | AT NAJAFGARH : DIFFERENTIAL. |
| 17 | 12.10.18 | 18:45 | BAWANA 220/66kV 100MVA Tx | 12.10.18 | 19:07 | 75A, BUS BAR PROT. |
| 18 | 12.10.18 | 19:08 | ROHINI 66/11kV, 20MVA Tx-II | 12.10.18 | 23:43 | E/F. |
| 19 | 13.10.18 | 08:29 | SUBZI MANDI 220/33kV 100MVA Tx-I | 13.10.18 | 10:39 | 186 |
| 20 | 13.10.18 | 09:46 | SUBZI MANDI 220/33kV 100MVA Tx-II | 13.10.18 | 11:03 | 186 |
| 21 | 14.10.18 | 02:55 | SARITA VIHAR 220/66kV 100MVA Tx-I | 14.10.18 | 08:15 | 86 |
| 22 | 14.10.18 | 08:17 | MEHRAULI 66/11kV, 20MVA Tx-II | 14.10.18 | 12:00 | BUCHHOOLZ, |
| 23 | 14.10.18 | 16:29 | PARKSTREET 220/33kV 100MVA Tx-II | 14.10.18 | 16:50 | ELECTROCUTION OF CAT. |
| 24 | 15.10.18 | 04:13 | 220kV BAMNAULI-PAPPANKALAN-II CKT-II | 15.10.18 | 06:20 | AT PAPPANKALAN-II : DIST PROT, ZONE-I, DIST 0.7KM. |
| 25 | 16.10.18 | 03:30 | NARAINA 33/11kV, 16MVA Tx-II | 16.10.18 | 19:26 | DIFFERENTIAL PROTECTION. |
| 26 | 16.10.18 | 16:05 | 220KV BAWANA-SHALIMARBAGH CKT-I | 16.10.18 | 17:56 | AT SHALIMARBAGH : TRIP SUPERVISION RELAY. |
| 27 | 18.10.18 | 04:07 | SARITA VIHAR 220/66kV 100MVA Tx-I | 18.10.18 | 14:55 | 86, SUPERVISION RELAY. |
| 28 | 19.10.18 | 16:30 | MEHRAULI 66/11kV, 20MVA Tx-II | 19.10.18 | 20:25 | O/C |
| 29 | 20.10.18 | 11:02 | PAPPANKALAN-II 220/66kV 100MVA Tx-I | 20.10.18 | 14:57 | DIFFERENTIAL, 86. |
| 30 | 21.10.18 | 12:37 | 220kV MEHRAULI - VASANT KUNJ CKT.-I | 21.10.18 | 12:59 | AT MEHRAULI : DIST PROT, R PHASE, DIST 1.653MM, 86ABC. AT VASANT KUNJ : CKT. DID NOT TRIP. |
| 31 | 21.10.18 | 15:30 | PATPARGANJ 220/66kV 100MVA Tx-II | 21.10.18 | 18:50 | 86 |
| 32 | 27.10.18 | 07:40 | VASANT KUNJ 66/11kV, 20MVA Tx-I | 27.10.18 | 11:25 | OLTTC TEMP. |
| 33 | 28.10.18 | 05:45 | 220kV WAZIRABAD-GEETA COLONY CKT-II | 28.10.18 | 08:18 | AT GEETA COLONY : DIST PROT, ZONE-I, DIST 3.463KM., E/F, O/C. |
| 34 | 28.10.18 | 15:05 | MEHRAULI 66/11kV, 20MVA Tx-I | 28.10.18 | 19:09 | TRIPPED WITHOUT INDICATION. |
| 35 | 31.10.18 | 09:25 | OKHLA 220/33kV 100MVA Tx-III | 31.10.18 | 10:25 | 86, O/C. |

19 DETAILS OF UNDER FREQUENCY RELAY OPERATIONS IN DELHI POWER SYSTEM DURING THE MONTH OF OCTOBER 2018

| DATE | S. N. | TIME | | Name of Grid | NAME OF AFFECTED FEEDERS | MODE | LOAD RELIEF IN MW |
|------|-------|------|----|--------------|--------------------------|------|-------------------|
| | | OUT | IN | | | | |
| | | | | | | | |
| | | | | NIL | | | |
| | | | | | | | |
| | | | | | | | |